

CREB3L2 antibody



Catalog Number: 109548

Product name

CREB3L2 antibody

Specificity

Human, Mouse, Rat; other species not tested.

Antibody description

CREB3L2 Rabbit Polyclonal antibody. Positive WB detected in HepG2 cells, mouse liver tissue, mouse testis tissue. Positive IF detected in HepG2 cells. Observed molecular weight by Western-blot: 60-70 kDa

Preparation

This antibody was obtained by immunization of CREB3L2 recombinant protein (Accession Number: NM_001253775). Purification method: Antigen affinity purified.

Formulation

PBS with 0.02% sodium azide and 50% glycerol pH 7.3.

Storage

Store at -20°C. DO NOT ALIQUOT

Clonality

Polyclonal

Ig Type

Rabbit IgG

Applications

ELISA, WB, IF

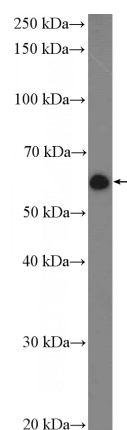
Dilutions

Recommended Dilution:

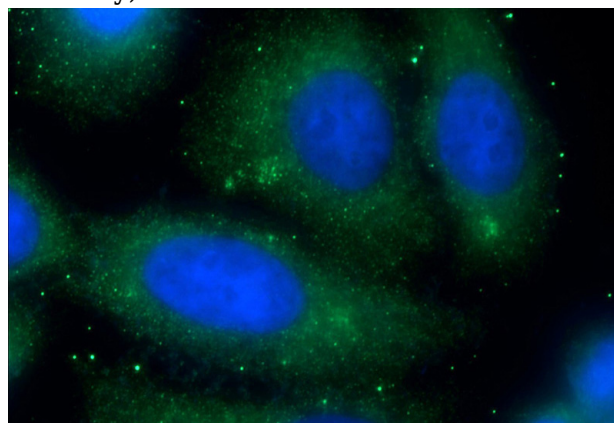
WB: 1:200-1:2000

IF: 1:20-1:200

Validations



HepG2 cells were subjected to SDS PAGE followed by western blot with Catalog No:109548(CREB3L2 Antibody) at dilution of 1:600



Immunofluorescent analysis of (-20oc Ethanol) fixed HepG2 cells using Catalog No:109548(CREB3L2 Antibody) at dilution of 1:50 and Alexa Fluor 488-conjugated AffiniPure Goat Anti-Rabbit IgG(H+L)