

# Human RET (His Tag) recombinant protein



Catalog Number: 503548

## General Information

### Gene Name Synonym

Cadherin family member 12; Proto-oncogene c-Ret; Soluble RET kinase fragment; Extracellular cell-membrane anchored RET cadherin 120 kDa fragment

### Protein Construction

A DNA sequence encoding the extracellular domain of human RET (P07949-1) (Met 1-Arg 635) was fused with a polyhistidine tag at the N-terminus.

### Organism

Human

### Expression Host

Human Cells

## QC Testing

### Purity

> 92 % as determined by SDS-PAGE

### Endotoxin

< 1.0 EU per  $\mu\text{g}$  of the protein as determined by the LAL method

### Stability

Samples are stable for up to twelve months from date of receipt at  $-70^{\circ}\text{C}$

### Predicted N terminal

Leu 29

### Molecular Mass

The recombinant human RET consists of 618 amino acids and has a calculated molecular mass of 69.1 kDa. The apparent molecular mass of the protein is approximately 110-120 kDa in SDS-PAGE under reducing conditions.

### Formulation

Lyophilized from sterile PBS, pH 7.4

1. 5 % trehalose and mannitol are added as protectants before lyophilization.

2. Please contact us for any concerns or special requirements.

## Usage Guide

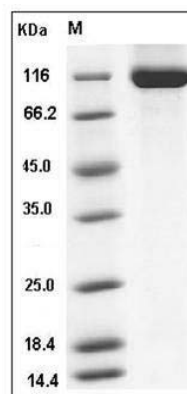
### Storage

Store it under sterile conditions at  $-20^{\circ}\text{C}$  to  $-80^{\circ}\text{C}$ . It is recommended that the protein be aliquoted for optimal storage. Avoid repeated freeze-thaw cycles.

### Reconstitution

Adding sterile water, prepare a stock solution of 0.25 mg/ml. Concentration is measured by UV-Vis.

### SDS-PAGE



Human RET Kinase Protein (His Tag) SDS-PAGE