

# MCHR1 antibody

Catalog Number: 112548

## Product name

MCHR1 antibody

## Specificity

Human; other species not tested.

## Antibody description

MCHR1 Rabbit Polyclonal antibody. Positive IHC detected in human heart tissue. Positive WB detected in Human anterior cingulate. Observed molecular weight by Western-blot: 46kd, 35kd

## Preparation

This antibody was obtained by immunization of MCHR1 recombinant protein (Accession Number: BC001736). Purification method: Antigen affinity purified.

## Formulation

PBS with 0.1% sodium azide and 50% glycerol pH 7.3.

## Storage

Store at -20°C. DO NOT ALIQUOT

## Clonality

Polyclonal

## Ig Type

Rabbit IgG

## Applications

ELISA, WB, IHC

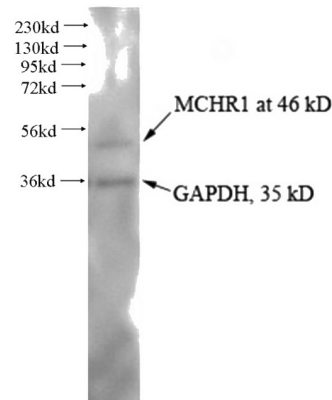
## Dilutions

Recommended Dilution:

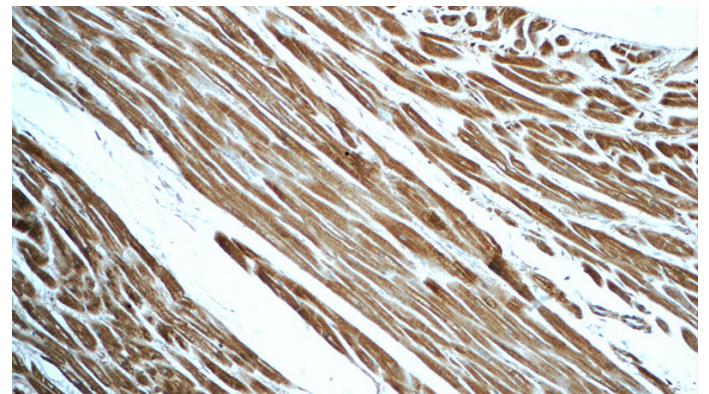
WB: 1:500-1:5000

IHC: 1:20-1:200

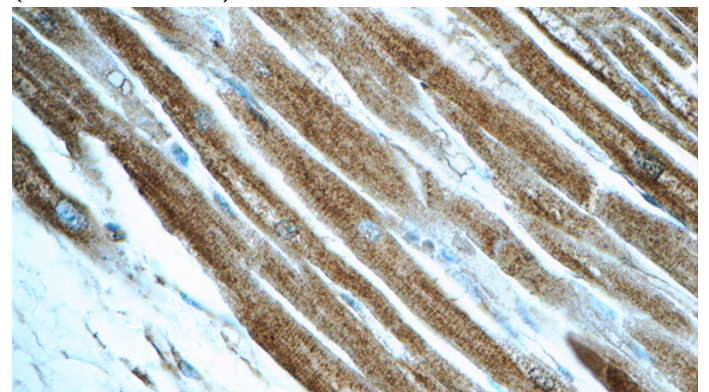
## Validations



Human anterior cingulate tissue were subjected to SDS PAGE followed by western blot with Catalog No:112548 (MCHR1 antibody) at dilution of 1:1000



Immunohistochemistry of paraffin-embedded human heart tissue slide using Catalog No:112548(MCHR1 Antibody) at dilution of 1:50 (under 10x lens)



Immunohistochemistry of paraffin-embedded human heart tissue slide using Catalog No:112548(MCHR1 Antibody) at dilution of 1:50 (under 40x lens)