

# HSD17B6 antibody



Catalog Number: 111548

## Product name

HSD17B6 antibody

## Specificity

Human, Mouse, Rat; other species not tested.

## Antibody description

HSD17B6 Rabbit Polyclonal antibody. Positive WB detected in human liver tissue. Positive IHC detected in human lung cancer tissue, human liver tissue, human prostate hyperplasia tissue. Observed molecular weight by Western-blot: 33-35kd

## Preparation

This antibody was obtained by immunization of HSD17B6 recombinant protein (Accession Number: XM\_005269209). Purification method: Antigen affinity purified.

## Formulation

PBS with 0.1% sodium azide and 50% glycerol pH 7.3.

## Storage

Store at -20°C. DO NOT ALIQUOT

## Clonality

Polyclonal

## Ig Type

Rabbit IgG

## Applications

ELISA, WB, IHC

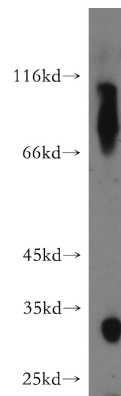
## Dilutions

Recommended Dilution:

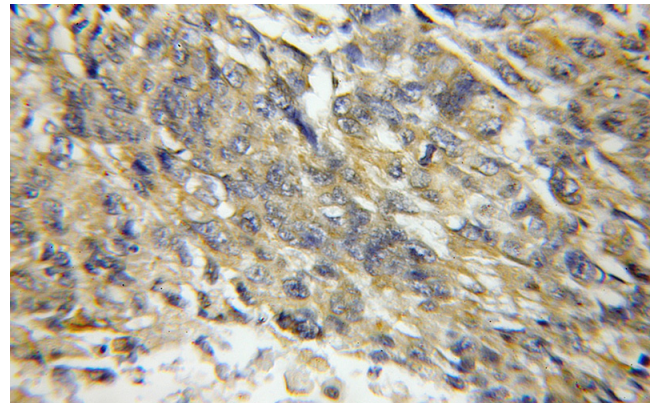
WB: 1:200-1:1000

IHC: 1:20-1:200

## Validations



human liver tissue were subjected to SDS PAGE followed by western blot with Catalog No:111548(HSD17B6 antibody) at dilution of 1:200



Immunohistochemical of paraffin-embedded human lung cancer using Catalog No:111548(HSD17B6 antibody) at dilution of 1:50 (under 10x lens)