

# Human EphA2/Eph Receptor A2 (His Tag) recombinant protein



Catalog Number: 500548

## General Information

### Gene Name Synonym

Epithelial cell kinase; Tyrosine-protein kinase receptor ECK

### Protein Construction

A DNA sequence encoding the human EPHA2 (P29317) (Met1-Asn534) was expressed with a polyhistidine tag at the C-terminus.

### Organism

Human

### Expression Host

Human Cells

## QC Testing

### Activity

Measured by its binding ability in a functional ELISA.

Immobilized human EPHA2-His at 10 µg/ml (100 µl/well) can bind human EFNA1-Fch (Cat:503293), The EC<sub>50</sub> of human EFNA1-Fch (Cat:503293) is 0.1-0.2 µg/ml.

### Purity

> 95 % as determined by SDS-PAGE

### Endotoxin

< 1.0 EU per µg of the protein as determined by the LAL method

### Stability

Samples are stable for up to twelve months from date of receipt at -70°C

### Predicted N terminal

Ala 24

### Molecular Mass

The recombinant human EPHA2 consists of 522 amino acids and predicts a molecular mass of 57.6 KDa. It migrates as an approximately 65-75 KDa band in SDS-PAGE under reducing conditions.

### Formulation

Lyophilized from sterile 20mM Tris, 150mM NaCl, pH 7.5.

1. 5 % trehalose and mannitol are added as protectants before lyophilization.

2. Please contact us for any concerns or special requirements.

## Usage Guide

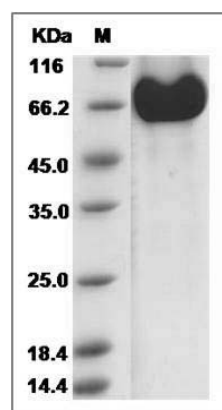
### Storage

Store it under sterile conditions at -20°C to -80°C. It is recommended that the protein be aliquoted for optimal storage. Avoid repeated freeze-thaw cycles.

### Reconstitution

Adding sterile water, prepare a stock solution of 0.25 mg/ml. Concentration is measured by UV-Vis.

### SDS-PAGE



Human EphA2 Protein (His Tag) SDS-PAGE