

# Anti-Calnexin Rabbit antibody



Catalog Number: 167148

## Product name

Rabbit IgG

Anti-Calnexin Rabbit antibody

## Applications

## Specificity

WB, IHC-P, ICC/IF, ELISA

Human, Mouse, Rat

## Dilutions

## Antibody description

WB: 1/500 - 1/2000

Calnexin Rabbit polyclonal antibody

IHC: 1/100 - 1/300

## Preparation

IF: 1/200 - 1/1000

Antigen: The antiserum was produced against synthesized peptide derived from human Calnexin. AA range:543-592

ELISA: 1/5000

## Validations

## Formulation

Liquid in PBS containing 50% glycerol, 0.5% BSA and 0.02% sodium azide.

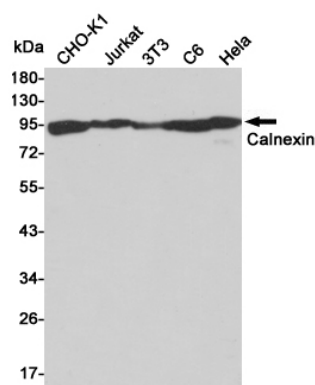
## Storage

Store at 4°C short term. Store at -20°C long term. Avoid freeze / thaw cycle.

## Clonality

Polyclonal

## Ig Type



Western blot detection of Calnexin in CHO-K1, Jurkat, 3T3, C6 and HeLa cell lysates using Calnexin rabbit pAb (1:50000 diluted). Predicted band size: 90 kDa. Observed band size: 90 kDa.