

# PPP1R12B antibody



Catalog Number: 114148

---

## Product name

PPP1R12B antibody

## Specificity

human, mouse, rat; other species not tested.

## Antibody description

PPP1R12B Rabbit Polyclonal antibody. Positive WB detected in mouse skeletal muscle tissue. Observed molecular weight by Western-blot: 125kd

## Preparation

This antibody was obtained by immunization of PPP1R12B recombinant protein (Accession Number: NM\_001167858). Purification method: Antigen affinity purified.

## Formulation

PBS with 0.02% sodium azide and 50% glycerol pH 7.3.

## Storage

Store at -20°C. DO NOT ALIQUOT

## Clonality

Polyclonal

## Ig Type

Rabbit IgG

## Applications

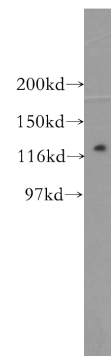
ELISA, WB

## Dilutions

Recommended Dilution:

WB: 1:500-1:5000

## Validations



mouse skeletal muscle tissue were subjected to SDS PAGE followed by western blot with Catalog No:114148(PPP1R12B antibody) at dilution of 1:500