

LARP7 antibody



Catalog Number: 112148

Product name

LARP7 antibody

Specificity

human, mouse, rat; other species not tested.

Antibody description

LARP7 Rabbit Polyclonal antibody. Positive WB detected in HeLa cells, human brain tissue, mouse liver tissue. Positive IHC detected in human kidney. Observed molecular weight by Western-blot: 67kd

Preparation

This antibody was obtained by immunization of LARP7 recombinant protein (Accession Number: BC006981). Purification method: Antigen affinity purified.

Formulation

PBS with 0.02% sodium azide and 50% glycerol pH 7.3.

Storage

Store at -20°C. DO NOT ALIQUOT

Clonality

Polyclonal

Ig Type

Rabbit IgG

Applications

ELISA, WB, IHC

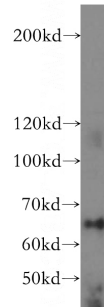
Dilutions

Recommended Dilution:

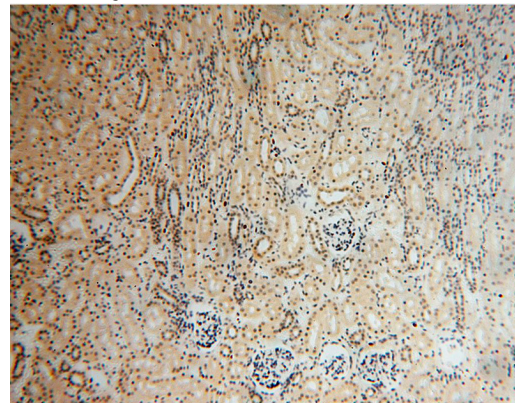
WB: 1:500-1:5000

IHC: 1:20-1:200

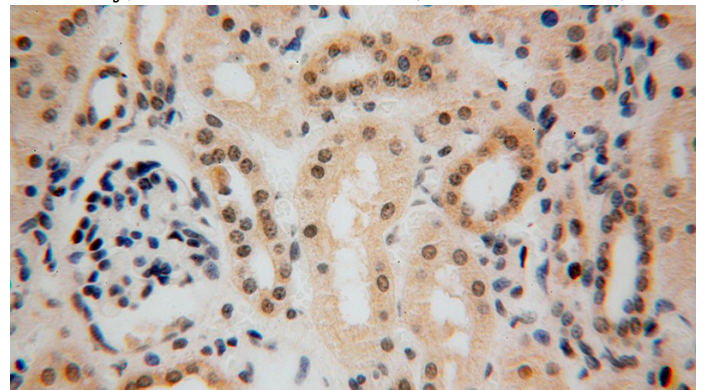
Validations



HeLa cells were subjected to SDS PAGE followed by western blot with Catalog No:112148(LARP7 antibody) at dilution of 1:500



Immunohistochemical of paraffin-embedded human kidney using Catalog No:112148(LARP7 antibody) at dilution of 1:100 (under 10x lens)



Immunohistochemical of paraffin-embedded human kidney using Catalog No:112148(LARP7 antibody) at dilution of 1:100 (under 40x lens)