

METTL13 Polyclonal Antibody



Catalog Number: 161148

Product name

METTL13 Polyclonal Antibody

Specificity

Human

Antibody description

Polyclonal antibody to METTL13

Preparation

Antigen: Recombinant fusion protein containing a sequence corresponding to amino acids 430-699 of human METTL13 (NP_057019.3).

Formulation

PBS with 0.02% sodium azide, 50% glycerol, pH7.3.

Storage

Store at -20°C. Avoid freeze / thaw cycles.

Clonality

Polyclonal

Ig Type

Rabbit IgG

Applications

WB, IHC, IF

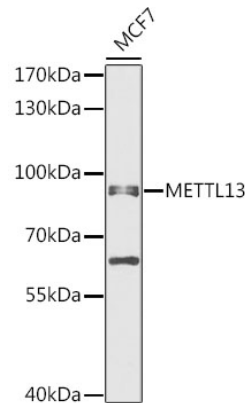
Dilutions

WB 1:500 - 1:2000

IHC 1:50 - 1:100

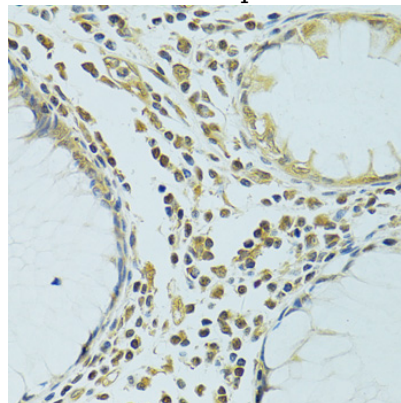
IF 1:50 - 1:100

Validations



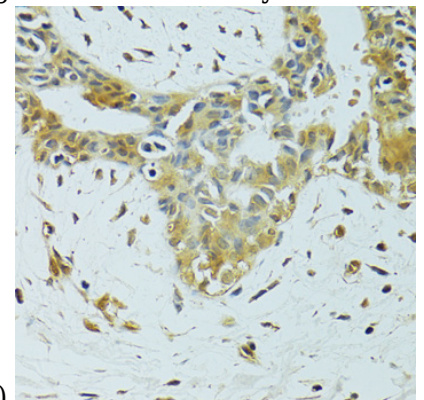
Western blot - METTL13 Polyclonal Antibody

Western blot analysis of extracts of MCF7 cells, using METTL13 antibody at 1:1000 dilution. Secondary antibody: HRP Goat Anti-Rabbit IgG (H+L) at 1:10000 dilution. Lysates/proteins: 25ug per lane. Blocking buffer: 3% nonfat dry milk in TBST. Detection: ECL Enhanced Kit. Exposure time: 30s.



Immunohistochemistry - METTL13 Polyclonal Antibody

Immunohistochemistry of paraffin-embedded human colon using METTL13 antibody at dilution



of 1:100 (40x lens).

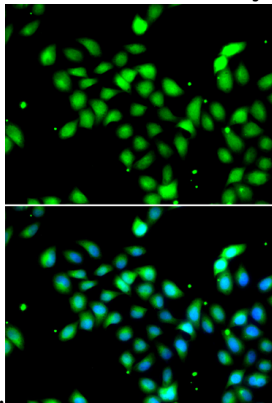
METTL13 Polyclonal Antibody



Catalog Number: 161148

Immunohistochemistry - METTL13 Polyclonal Antibody

Immunohistochemistry of paraffin-embedded human breast cancer using METTL13 antibody at



dilution of 1:100 (40x lens).

Immunofluorescence - METTL13 Polyclonal Antibody

Immunofluorescence analysis of A549 cells using METTL13 antibody . Blue: DAPI for nuclear staining.