

General Information

Gene Name Synonym

Aminoacylproline aminopeptidase; Membrane-bound aminopeptidase P; X-Pro aminopeptidase 2

Protein Construction

A DNA sequence encoding the human XPNPEP2 (O43895) (Met 1-Ala 650) without the pro peptide was expressed, with a polyhistidine tag at the C-terminus.

Organism

Human

Expression Host

Human Cells

QC Testing

Activity

Measured by its ability to cleave the fluorogenic peptide substrate, H-Lys(2-Aminobenzoyl)Pro-Pro-pNitroanilide(K(Abz)PP-pNA).
The specific activity is > 300 pmoles/min/μg.

Purity

> 97 % as determined by SDS-PAGE

Endotoxin

< 1.0 EU per μg of the protein as determined by the LAL method

Stability

Samples are stable for up to twelve months from date of receipt at -70°C

Predicted N terminal

His 22

Molecular Mass

The recombinant human XPNPEP2 consists of 640 amino acids and predicts a molecular mass of 72 kDa. In SDS-PAGE under reducing conditions, the apparent molecular mass of rh XPNPEP2 is approximately 80 kDa due to glycosylation.

Formulation

Lyophilized from sterile PBS, pH 7.4

1. 5 % trehalose and mannitol are added as protectants before lyophilization.
2. Please contact us for any concerns or special requirements.

Usage Guide

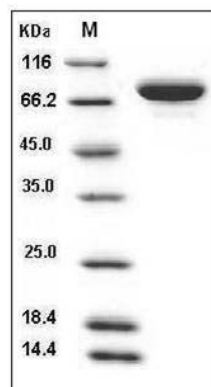
Storage

Store it under sterile conditions at -20°C to -80°C. It is recommended that the protein be aliquoted for optimal storage. Avoid repeated freeze-thaw cycles.

Reconstitution

Adding sterile water, prepare a stock solution of 0.25 mg/ml. Concentration is measured by UV-Vis.

SDS-PAGE



Human XPNPEP2 / X-Pro aminopeptidase 2 Protein (His Tag) SDS-PAGE