

Carboxypeptidase A2 antibody



Catalog Number: 108848

Product name

Carboxypeptidase A2 antibody

Specificity

Human, Mouse, Rat; other species not tested.

Antibody description

Carboxypeptidase A2 Rabbit Polyclonal antibody. Positive WB detected in mouse pancreas tissue. Positive IHC detected in human pancreas tissue. Observed molecular weight by Western-blot: 46kd

Preparation

This antibody was obtained by immunization of Carboxypeptidase A2 recombinant protein (Accession Number: NM_001869). Purification method: Antigen affinity purified.

Formulation

PBS with 0.02% sodium azide and 50% glycerol pH 7.3.

Storage

Store at -20°C. DO NOT ALIQUOT

Clonality

Polyclonal

Ig Type

Rabbit IgG

Applications

ELISA, WB, IHC

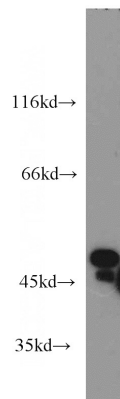
Dilutions

Recommended Dilution:

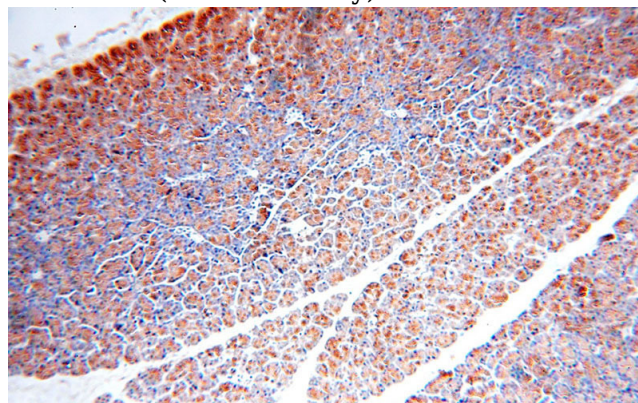
WB: 1:1000-1:10000

IHC: 1:20-1:200

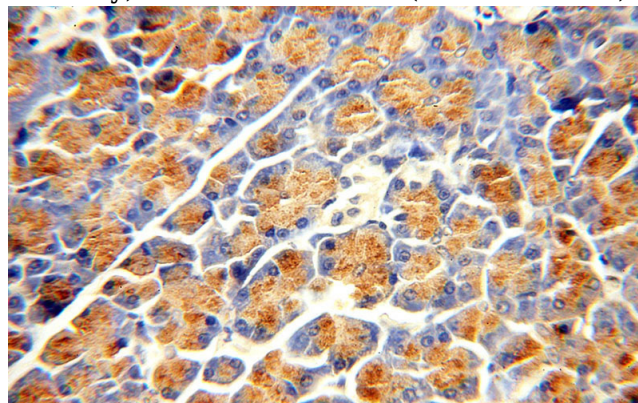
Validations



mouse pancreas tissue were subjected to SDS PAGE followed by western blot with Catalog No:108848(CPA2 antibody) at dilution of 1:2000



Immunohistochemical of paraffin-embedded human pancreas using Catalog No:108848(CPA2 antibody) at dilution of 1:100 (under 10x lens)



Immunohistochemical of paraffin-embedded human pancreas using Catalog No:108848(CPA2 antibody) at dilution of 1:100 (under 40x lens)