

Anti-IFRD1 Rabbit antibody



Catalog Number: 167848

Product name

Anti-IFRD1 Rabbit antibody

Specificity

Human, Mouse, Rat

Antibody description

IFRD1 Rabbit monoclonal antibody

Preparation

Antigen: A synthetic peptide of human IFRD1

Formulation

50nM Tris-Glycine(pH 7.4), 0.15M NaCl, 40%Glycerol, 0.01% sodium azide and 0.05% BSA

Storage

Store at 4°C short term. Store at -20°C long term. Avoid freeze / thaw cycle.

Clonality

Monoclonal

Ig Type

Rabbit IgG

Applications

WB, IHC-P, ICC/IF

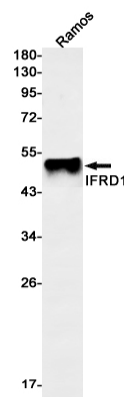
Dilutions

WB: 1/2000-1/10000

IHC: 1/20-1/50

ICC/IF: 1/20-1/100

Validations



Western blot detection of IFRD1 in Ramos cell lysates using IFRD1 Rabbit mAb(1:1000 diluted).Predicted band size:50kDa.Observed band size:50kDa.