

# Human RGS1/1R20 (His Tag) recombinant protein



Catalog Number: 502848

## General Information

### Protein Construction

A DNA sequence encoding the human RGS1 (NP\_002913.3) (Met1-Lys196) was expressed with a polyhistidine tag at the N-terminus.

### Organism

Human

### Expression Host

E. coli

## QC Testing

### Purity

> 90 % as determined by SDS-PAGE

### Endotoxin

Please contact us for more information.

### Stability

Samples are stable for up to twelve months from date of receipt at -70°C

### Predicted N terminal

His

### Molecular Mass

The recombinant human RGS1 consists of 214 amino acids and predicts a molecular mass of 24.7 kDa. It migrates as an approximately 28 kDa band

in SDS-PAGE under reducing conditions.

### Formulation

Lyophilized from sterile 50 mM Tris, 200 mM NaCl, pH 8.5.

1. 5 % trehalose and mannitol are added as protectants before lyophilization.
2. Please contact us for any concerns or special requirements.

## Usage Guide

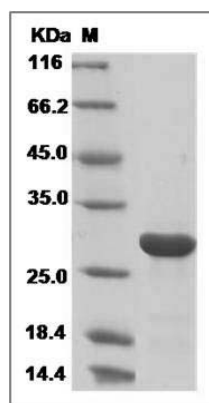
### Storage

Store it under sterile conditions at -20°C to -80°C. It is recommended that the protein be aliquoted for optimal storage. Avoid repeated freeze-thaw cycles.

### Reconstitution

Adding sterile water, prepare a stock solution of 0.25 mg/ml. Concentration is measured by UV-Vis.

### SDS-PAGE



Human RGS1 Protein (His Tag) SDS-PAGE