

INSIG1 antibody

Catalog Number: 111848

Product name

INSIG1 antibody

IHC: 1:20-1:200

IF: 1:20-1:200

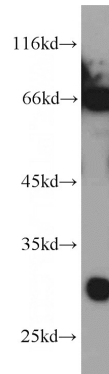
Specificity

Human, Mouse; other species not tested.

Validations

Antibody description

INSIG1 Rabbit Polyclonal antibody. Positive IHC detected in human liver tissue, human kidney tissue. Positive IF detected in MCF-7 cells. Positive WB detected in A549 cells, HepG2 cells, MCF7 cells, SGC-7901 cells. Observed molecular weight by Western-blot: 28-31; 66-70 kDa



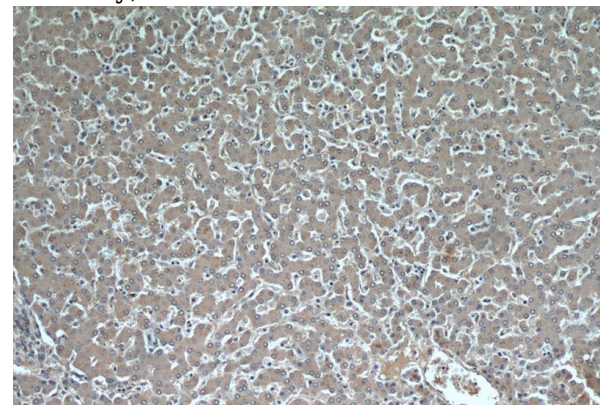
Preparation

This antibody was obtained by immunization of INSIG1 recombinant protein (Accession Number: NM_001346592). Purification method: Antigen affinity purified.

A549 cells were subjected to SDS PAGE followed by western blot with Catalog No:111848(INSIG1 antibody) at dilution of 1:1000

Formulation

PBS with 0.02% sodium azide and 50% glycerol pH 7.3.



Storage

Store at -20°C. DO NOT ALIQUOT

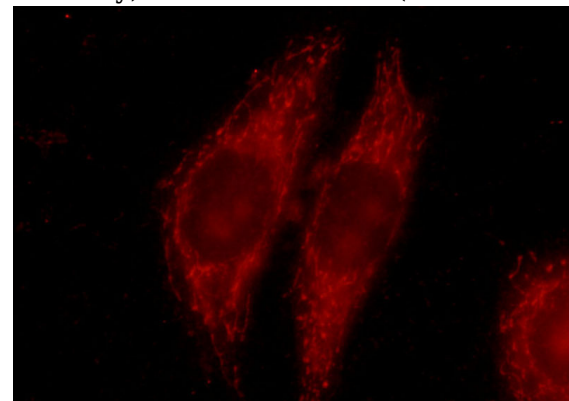
Clonality

Polyclonal

Immunohistochemical of paraffin-embedded human liver using Catalog No:111848(INSIG1 antibody) at dilution of 1:50 (under 10x lens)

Ig Type

Rabbit IgG



Applications

ELISA, IF, IHC, WB

Dilutions

Recommended Dilution:

WB: 1:500-1:5000

Immunofluorescent analysis of MCF-7 cells using Catalog No:111848(INSIG1 Antibody) at dilution

INSIG1 antibody



Catalog Number: 111848

of 1:50 and Rhodamine-Goat anti-Rabbit IgG