

# COMT antibody



Catalog Number: 109448

## Product name

COMT antibody

WB: 1:200-1:2000

IP: 1:200-1:2000

## Specificity

Human, Mouse, Rat; other species not tested.

IHC: 1:20-1:200

IF: 1:20-1:200

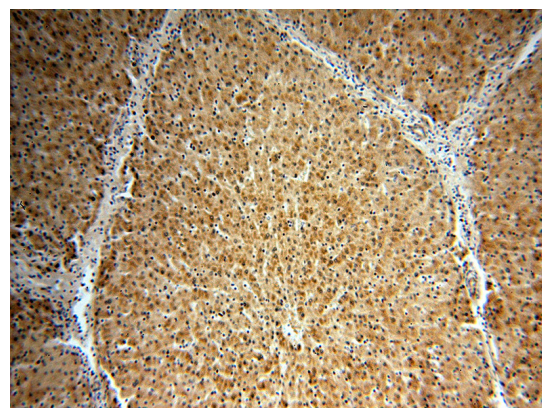
## Antibody description

COMT Rabbit Polyclonal antibody. Positive WB detected in mouse liver tissue, A431 cells, BxPC-3 cells. Positive IP detected in K-562 cells. Positive FC detected in HepG2 cells. Positive IHC detected in human liver tissue. Positive IF detected in HepG2 cells. Observed molecular weight by Western-blot: 30 kDa

## Validations

### Preparation

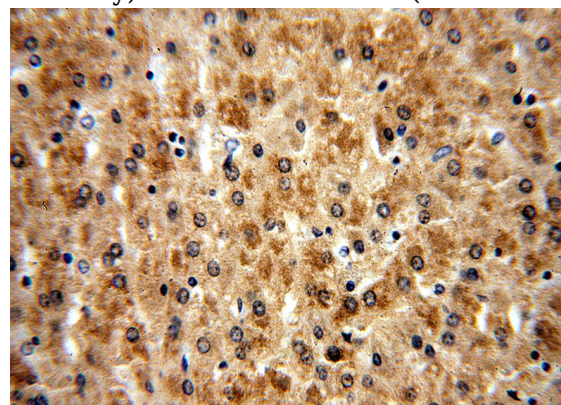
This antibody was obtained by immunization of COMT recombinant protein (Accession Number: BC000419). Purification method: Antigen affinity purified.



Immunohistochemical of paraffin-embedded human liver using Catalog No:109448(COMT antibody) at dilution of 1:100 (under 10x lens)

### Formulation

PBS with 0.02% sodium azide and 50% glycerol pH 7.3.



Immunohistochemical of paraffin-embedded human liver using Catalog No:109448(COMT antibody) at dilution of 1:100 (under 40x lens)

### Storage

Store at -20°C. DO NOT ALIQUOT

### Clonality

Polyclonal

### Ig Type

Rabbit IgG

### Applications

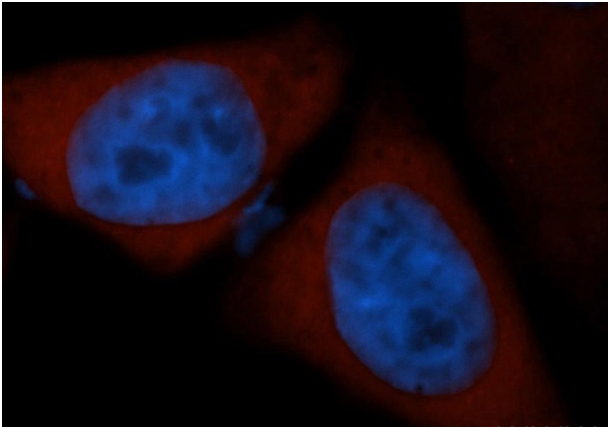
ELISA, IHC, IF, FC, IP, WB

### Dilutions

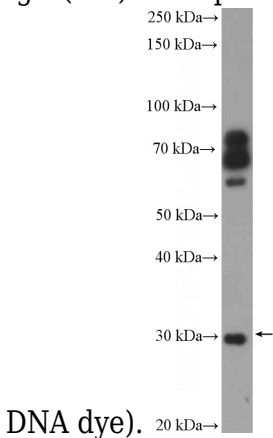
Recommended Dilution:

# COMT antibody

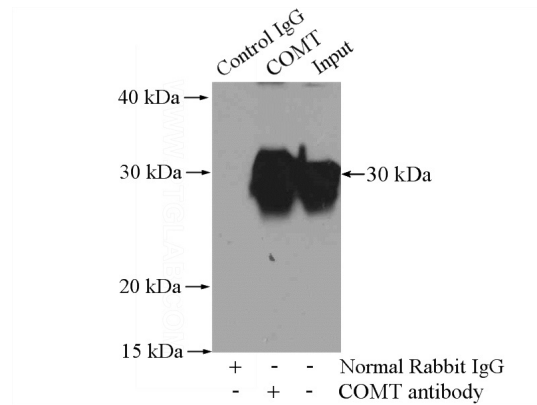
Catalog Number: 109448



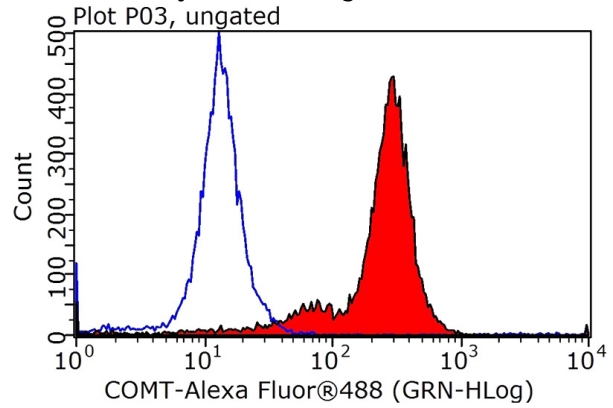
Immunofluorescent analysis of HepG2 cells, using COMT antibody Catalog No:109448 at 1:50 dilution and Rhodamine-labeled goat anti-rabbit IgG (red). Blue pseudocolor = DAPI (fluorescent



mouse liver tissue were subjected to SDS PAGE followed by western blot with Catalog No:109448(COMT Antibody) at dilution of 1:600



IP Result of anti-COMT (IP:Catalog No:109448, 4ug; Detection:Catalog No:109448 1:500) with K-562 cells lysate 1200ug.



1X10<sup>6</sup> HepG2 cells were stained with 0.2ug COMT antibody (Catalog No:109448, red) and control antibody (blue). Fixed with 90% MeOH blocked with 3% BSA (30 min). Alexa Fluor 488-conjugated AffiniPure Goat Anti-Rabbit IgG(H+L) with dilution 1:1000.