

Anti-KRIT1 Rabbit antibody



Catalog Number: 167448

Product name

Anti-KRIT1 Rabbit antibody

Specificity

Human, Mouse

Antibody description

KRIT1 Rabbit polyclonal antibody

Preparation

Antigen: Recombinant protein of human KRIT1

Formulation

Supplied in 50nM Tris-Glycine(pH 7.4), 0.15M NaCl, 40%Glycerol, 0.01% sodium azide and 0.05% BSA.

Storage

Store at -20°C. Stable for 12 months from date of receipt.

Clonality

Polyclonal

Ig Type

Rabbit IgG

Applications

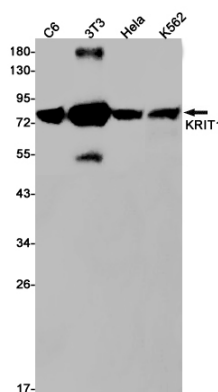
WB, ICC/IF

Dilutions

WB: 1/1000

ICC/IF: 1/20

Validations



Western blot detection of KRIT1 in C6,3T3,HeLa,K562 cell lysates using KRIT1 Rabbit pAb(1:1000 diluted).Predicted band size:84kDa.Observed band size:84kDa.