

RAB3IP/Rabin8 antibody



Catalog Number: 114448

Product name

RAB3IP/Rabin8 antibody

Recommended Dilution:

WB: 1:1000-1:10000

Specificity

Human, Mouse, Rat; other species not tested.

IP: 1:500-1:5000

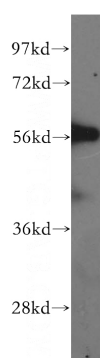
IHC: 1:20-1:200

Antibody description

RAB3IP/Rabin8 Rabbit Polyclonal antibody. Positive IF detected in HepG2 cells. Positive IHC detected in human pancreas cancer tissue, human pancreas tissue. Positive IP detected in mouse lung tissue. Positive WB detected in human brain tissue, human heart tissue, mouse lung tissue. Observed molecular weight by Western-blot: 56 kDa

IF: 1:10-1:100

Validations



Preparation

This antibody was obtained by immunization of RAB3IP/Rabin8 recombinant protein (Accession Number: XM_017018777). Purification method: Antigen affinity purified.

human brain tissue were subjected to SDS PAGE followed by western blot with Catalog No:114448(RABIN8 antibody) at dilution of 1:2000

Formulation

PBS with 0.1% sodium azide and 50% glycerol pH 7.3.

Storage

Store at -20°C. DO NOT ALIQUOT

Clonality

Polyclonal

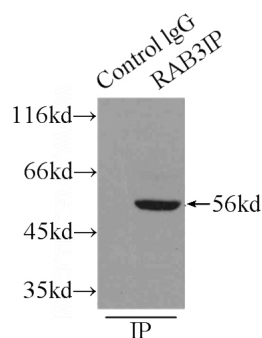
Ig Type

Rabbit IgG

Applications

ELISA, WB, IHC, IF, IP

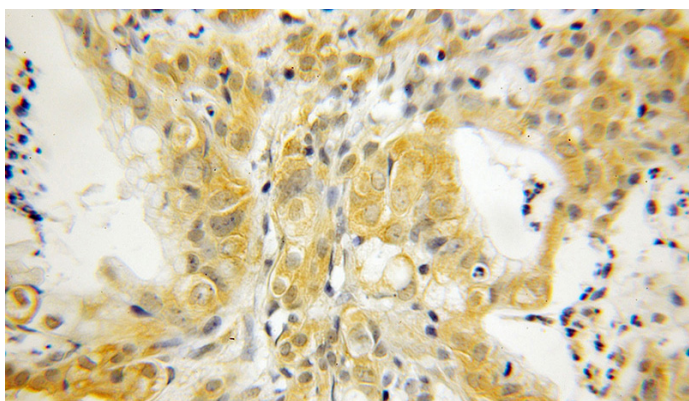
Dilutions



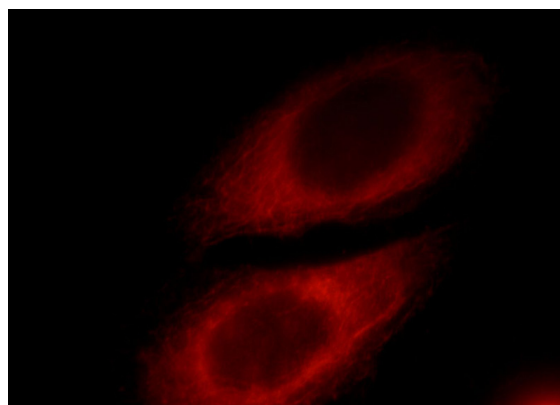
IP Result of anti-RABIN8 (IP:Catalog No:114448, 3ug; Detection:Catalog No:114448 1:1000) with mouse lung tissue lysate 4500ug.

RAB3IP/Rabin8 antibody

Catalog Number: 114448



Immunohistochemical of paraffin-embedded human pancreas cancer using Catalog No:114448(RABIN8 antibody) at dilution of 1:50 (under 10x lens)



Immunofluorescent analysis of HepG2 cells, using RAB3IP antibody Catalog No:114448 at 1:25 dilution and Rhodamine-labeled goat anti-rabbit IgG (red).