

# Anti-NRG1 antibody



Catalog Number: 104448

## Product name

Anti-NRG1 antibody

## Specificity

Human NRG1-beta 1

**No cross-reactivity** in WB with Human NRG1-alpha

## Antibody description

Mouse monoclonal to NRG1

## Preparation

This antibody was produced from a hybridoma resulting from the fusion of a mouse myeloma with B cells obtained from a mouse immunized with purified, a synthetic peptide corresponding to the center region of the human NRG1 isoform beta 1. The IgG fraction of the cell culture supernatant was purified by Protein A affinity chromatography.

## Formulation

0.2 µm filtered solution in PBS with 5% trehalose

## Storage

This antibody can be stored at 2°C-8°C for one month without detectable loss of activity. Antibody products are stable for twelve months from date of receipt when stored at -20°C to -80°C.

Preservative-Free.

Sodium azide is recommended to avoid contamination (final concentration 0.05%-0.1%). It is toxic to cells and should be disposed of properly. Avoid repeated freeze-thaw cycles.

## Clonality

Monoclonal

## Ig Type

Mouse IgG2b

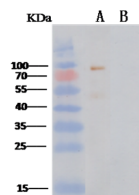
## Applications

WB

## Dilutions

WB: 1-2 µg/mL

## Validations



Items \ Lanes	A	B
Sample (Protein)	NRG1-beta 1 (11609-H011P)	NRG1-alpha (13499-H021)
Sample Volume (ng/lane)	100	100
Gel	13% SDS-PAGE reducing gel	
Recommended Concentration	1-2 µg/ml	
Secondary Antibody	Goat anti-Rabbit IgG F(ab)2/HRP, 1 µg/ml.	

NRG1-beta 1 Antibody, Mouse MAb, Western blot