

ZFYVE28 antibody



Catalog Number: 117048

Product name

ZFYVE28 antibody

Immunogen

[Human ZFYVE28 Recombinant protein \(His tag\)](#)

Specificity

Human; other species not tested.

Antibody description

ZFYVE28 Rabbit Polyclonal antibody. Positive IF detected in HepG2 cells. Positive WB detected in MCF-7 cells. Observed molecular weight by Western-blot: 100 kDa

Preparation

This antibody was obtained by immunization of ZFYVE28 recombinant protein (Accession Number: NM_020972). Purification method: Antigen affinity purified.

Formulation

PBS with 0.1% sodium azide and 50% glycerol pH 7.3.

Storage

Store at -20°C. DO NOT ALIQUOT

Clonality

Polyclonal

Ig Type

Rabbit IgG

Applications

ELISA, WB, IF

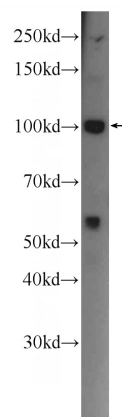
Dilutions

Recommended Dilution:

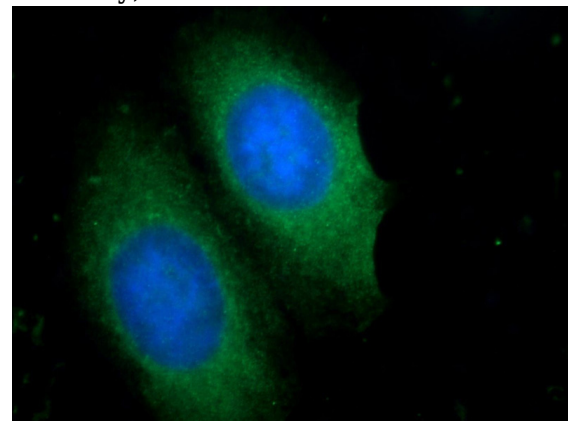
WB: 1:200-1:1000

IF: 1:10-1:100

Validations



MCF-7 cells were subjected to SDS PAGE followed by western blot with Catalog No:117048(ZFYVE28 Antibody) at dilution of 1:300



Immunofluorescent analysis of HepG2 cells using Catalog No:117048(ZFYVE28 Antibody) at dilution of 1:25 and Alexa Fluor 488-conjugated AffiniPure Goat Anti-Rabbit IgG(H+L)