

# Human EGFR/HER1/ErbB1 (His & GST Tag) recombinant protein



Catalog Number: 504048

## General Information

### Gene Name Synonym

Proto-oncogene c-ErbB-1; Receptor tyrosine-protein kinase erbB-1

### Protein Construction

A DNA sequence encoding the cytoplasmic domain (Met 668-Ala 1210) of human EGFR (NP\_005219) was fused with the N-terminal polyhistidine-tagged GST tag at the N-terminus.

### Organism

Human

### Expression Host

Baculovirus-Insect Cells

## QC Testing

### Activity

The specific activity was determined to be 105 nmol/min/mg using Poly(Glu:Tyr) 4:1 as substrate (see Activity Assay Protocol)

### Purity

> 85 % as determined by SDS-PAGE

### Endotoxin

<1.0 EU per µg protein as determined by the LAL method.

### Stability

Samples are stable for up to twelve months from date of receipt at -70°C

### Predicted N terminal

Met

### Molecular Mass

The recombinant human EGFR /GST chimera consists of 780 amino acids and has a calculated molecular mass of 89.1 kDa.

### Formulation

Supplied as sterile 20 mM Tris, 500 mM NaCl, 10 % glycerol, pH 7.4.

Please contact us for any concerns or special requirements.

## Usage Guide

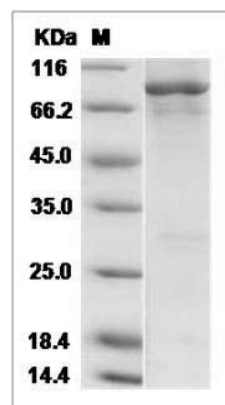
### Storage

Store it under sterile conditions at -20°C to -80°C. It is recommended that the protein be aliquoted for optimal storage. Avoid repeated freeze-thaw cycles.

### Reconstitution

Adding sterile water, prepare a stock solution of 0.25 mg/ml. Concentration is measured by UV-Vis.

### SDS-PAGE



Human EGFR / HER1 / ErbB1 (aa 668-1210)  
Protein (His & GST Tag) SDS-PAGE