

# DOCK9 antibody

Catalog Number: 110048

## Product name

DOCK9 antibody

WB: 1:200-1:2000

IP: 1:200-1:2000

## Specificity

Human, Mouse; other species not tested.

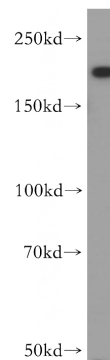
IHC: 1:20-1:200

IF: 1:50-1:500

## Antibody description

DOCK9 Rabbit Polyclonal antibody. Positive IHC detected in human heart tissue. Positive IF detected in HeLa cells. Positive IP detected in mouse brain tissue. Positive WB detected in A549 cells, HeLa cells, human brain tissue, human heart tissue, human placenta tissue, MCF7 cells, mouse brain tissue. Observed molecular weight by Western-blot: 200-236 kDa

## Validations



## Preparation

This antibody was obtained by immunization of Peptide (Accession Number: NM\_015296). Purification method: Antigen affinity purified.

A549 cells were subjected to SDS PAGE followed by western blot with Catalog No:110048(Dock9 antibody) at dilution of 1:500

## Formulation

PBS with 0.02% sodium azide and 50% glycerol pH 7.3.

## Storage

Store at -20°C. DO NOT ALIQUOT

## Clonality

Polyclonal

## Ig Type

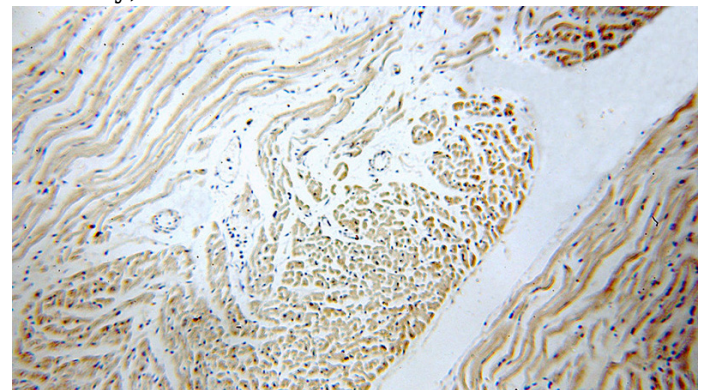
Rabbit IgG

## Applications

ELISA, WB, IHC, IP, IF

## Dilutions

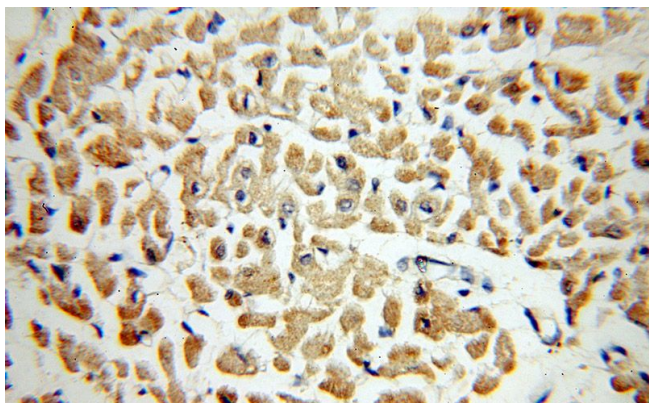
Recommended Dilution:



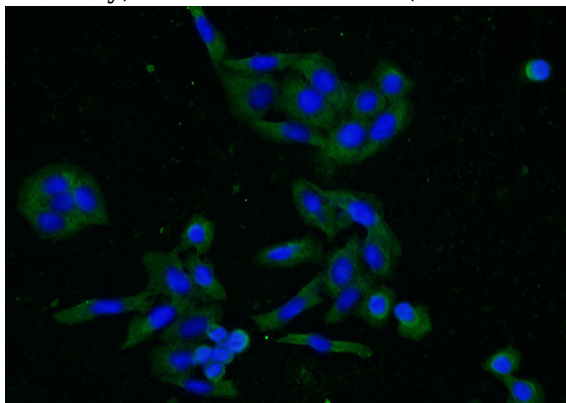
Immunohistochemical of paraffin-embedded human heart using Catalog No:110048(Dock9 antibody) at dilution of 1:100 (under 10x lens)

# DOCK9 antibody

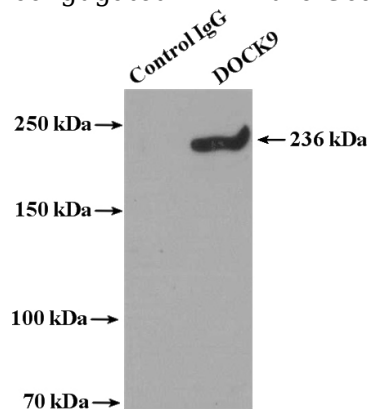
Catalog Number: 110048



Immunohistochemical of paraffin-embedded human heart using Catalog No:110048(Dock9 antibody) at dilution of 1:100 (under 40x lens)



Immunofluorescent analysis of (-20oc Ethanol) fixed HeLa cells using Catalog No:110048(Dock9 Antibody) at dilution of 1:50 and Alexa Fluor 488-conjugated AffiniPure Goat Anti-Rabbit IgG(H+L)



IP Result of anti-Dock9 (IP:Catalog No:110048, 4ug; Detection:Catalog No:110048 1:800) with mouse brain tissue lysate 4000ug.