

# Human DLL4/Delta-like 4 (His Tag) recombinant protein



Catalog Number: 500048

## General Information

### Gene Name Synonym

Drosophila Delta homolog 4

### Protein Construction

A DNA sequence encoding the extracellular domain (Met 1-Pro 524) of human DLL4 (NP\_061947.1) pro-protein was expressed, with a polyhistidine tag at the C-terminus.

### Organism

Human

### Expression Host

Human Cells

## QC Testing

### Activity

1. Measured by its ability to bind human Notch1 in a functional ELISA.
2. Measured by the ability of the immobilized protein to enhance BMP2 induced alkaline phosphatase activity in C3H10T1/2 mouse embryonic fibroblast cells. The ED<sub>50</sub> for this effect is typically 2-10 µg/mL in the presence of 500 ng/mL recombinant human BMP2.

### Purity

> 98 % as determined by SDS-PAGE

### Endotoxin

< 1.0 EU per µg of the protein as determined by the LAL method

### Stability

Samples are stable for up to twelve months from date of receipt at -70°C

### Predicted N terminal

Ser 27

### Molecular Mass

The recombinant human DLL4 consists of 509 amino acids and predicts a molecular mass of 55.7 kDa. As a result of glycosylation, the apparent molecular mass of rhDLL4 is approximately 55-70 kDa band in SDS-PAGE under reducing conditions.

### Formulation

Lyophilized from sterile PBS, pH 7.4

1. 5 % trehalose and mannitol are added as protectants before lyophilization.

2. Please contact us for any concerns or special requirements.

## Usage Guide

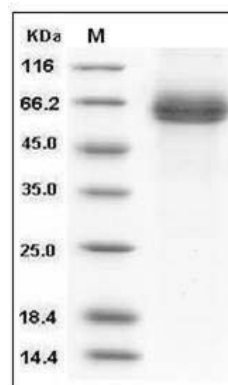
### Storage

Store it under sterile conditions at -20°C to -80°C. It is recommended that the protein be aliquoted for optimal storage. Avoid repeated freeze-thaw cycles.

### Reconstitution

Adding sterile water, prepare a stock solution of 0.25 mg/ml. Concentration is measured by UV-Vis.

### SDS-PAGE



Human DLL4 / Delta4 Protein (His Tag) SDS-PAGE