

# CUEDC2 antibody



Catalog Number: 109738

## Product name

CUEDC2 antibody

Recommended Dilution:

WB: 1:500-1:5000

## Immunogen

[Human CUEDC2 Recombinant protein \(GST tag\)](#)

IP: 1:200-1:2000

IHC: 1:20-1:200

## Specificity

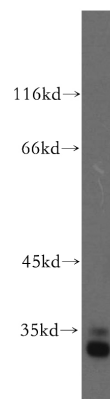
Human, Mouse, Rat; other species not tested.

IF: 1:10-1:100

## Validations

### Antibody description

CUEDC2 Rabbit Polyclonal antibody. Positive IP detected in mouse brain tissue. Positive WB detected in human kidney tissue, human brain tissue. Positive IF detected in Hela cells. Positive IHC detected in human brain tissue. Observed molecular weight by Western-blot: 32 kDa



### Preparation

This antibody was obtained by immunization of CUEDC2 recombinant protein (Accession Number: BC000262). Purification method: Antigen affinity purified.

human kidney tissue were subjected to SDS PAGE followed by western blot with Catalog No:109738(CUEDC2 antibody) at dilution of 1:300

### Formulation

PBS with 0.02% sodium azide and 50% glycerol pH 7.3.

### Storage

Store at -20°C. DO NOT ALIQUOT

### Clonality

Polyclonal

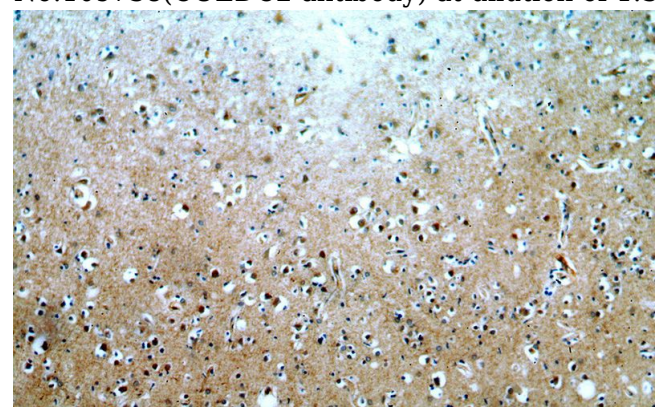
### Ig Type

Rabbit IgG

### Applications

ELISA, WB, IF, IHC, IP

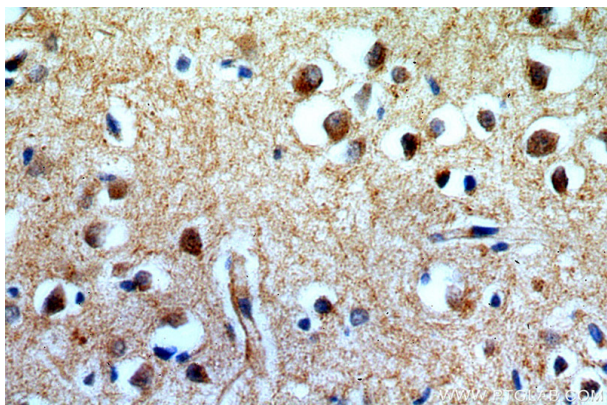
### Dilutions



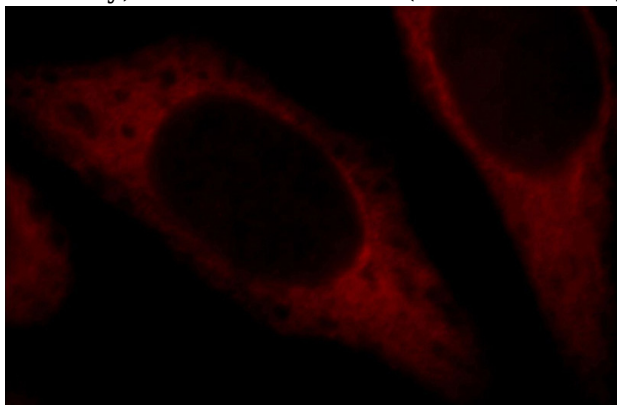
Immunohistochemical of paraffin-embedded human brain using Catalog No:109738(CUEDC2 antibody) at dilution of 1:100 (under 10x lens)

# CUEDC2 antibody

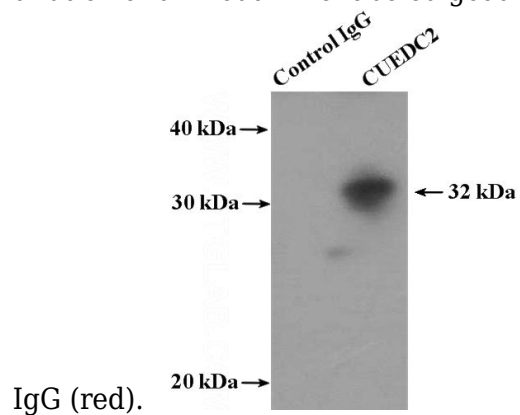
Catalog Number: 109738



Immunohistochemical of paraffin-embedded human brain using Catalog No:109738(CUEDC2 antibody) at dilution of 1:100 (under 40x lens)



Immunofluorescent analysis of HeLa cells, using CUEDC2 antibody Catalog No:109738 at 1:25 dilution and Rhodamine-labeled goat anti-rabbit



IP Result of anti-CUEDC2 (IP:Catalog No:109738, 4ug; Detection:Catalog No:109738 1:500) with mouse brain tissue lysate 4000ug.