

acid phosphatase, prostate antibody



Catalog Number: 107738

Product name

acid phosphatase, prostate antibody

Recommended Dilution:

WB: 1:500-1:5000

Specificity

Human, Mouse; other species not tested.

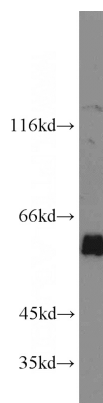
IHC: 1:20-1:200

IF: 1:20-1:200

Antibody description

acid phosphatase, prostate Rabbit Polyclonal antibody. Positive IF detected in PC-3 cells. Positive IHC detected in human prostate cancer tissue, human prostate hyperplasia tissue. Positive WB detected in PC-3 cells, COLO 320 cells, MCF7 cells, mouse lung tissue, mouse testis tissue. Observed molecular weight by Western-blot: 50-60 kDa

Validations



Preparation

This antibody was obtained by immunization of acid phosphatase, prostate recombinant protein (Accession Number: NM_001134194). Purification method: Antigen affinity purified.

PC-3 cells were subjected to SDS PAGE followed by western blot with Catalog No:107738(ACPP antibody) at dilution of 1:1000

Formulation

PBS with 0.02% sodium azide and 50% glycerol pH 7.3.

Storage

Store at -20°C. DO NOT ALIQUOT

Clonality

Polyclonal

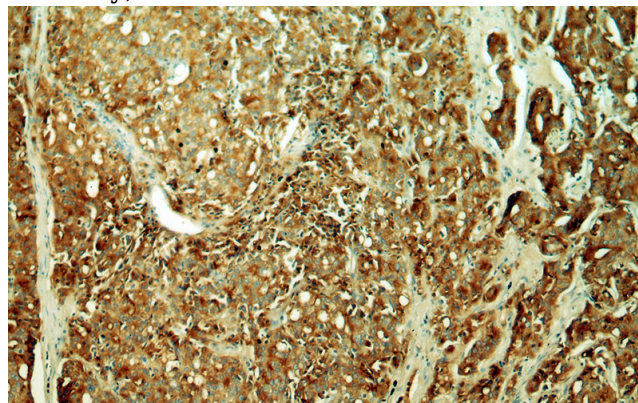
Ig Type

Rabbit IgG

Applications

ELISA, WB, IHC, IF

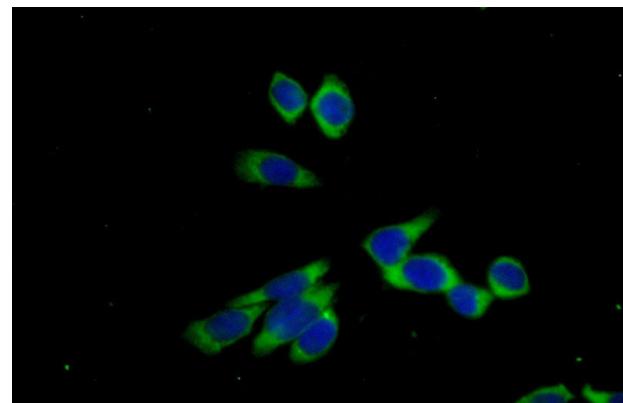
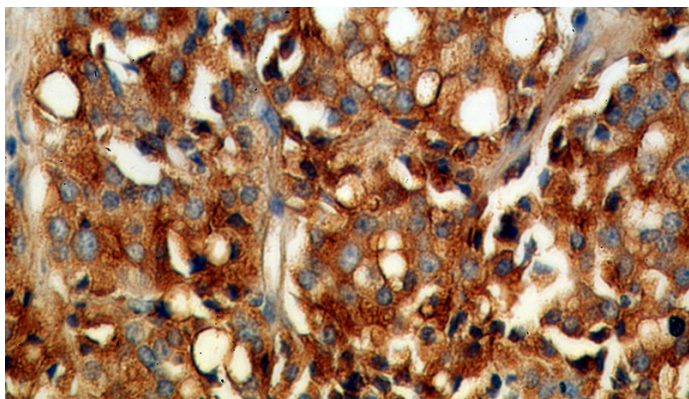
Dilutions



Immunohistochemical of paraffin-embedded human prostate cancer using Catalog No:107738(ACPP antibody) at dilution of 1:50 (under 10x lens)

acid phosphatase, prostate antibody

Catalog Number: 107738



Immunohistochemical of paraffin-embedded human prostate cancer using Catalog No:107738(ACPP antibody) at dilution of 1:50 (under 40x lens)

Immunofluorescent analysis of (-20oc Ethanol) fixed PC-3 cells using Catalog No:107738(ACPP Antibody) at dilution of 1:50 and Alexa Fluor 488-conjugated AffiniPure Goat Anti-Rabbit IgG(H+L)