

# STS antibody

Catalog Number: 115738

## Product name

STS antibody

Recommended Dilution:

WB: 1:500-1:5000

## Specificity

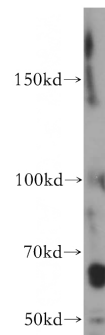
Human, Mouse, Rat; other species not tested.

IHC: 1:20-1:200

## Antibody description

STS Rabbit Polyclonal antibody. Positive WB detected in MCF7 cells, human placenta tissue. Positive IHC detected in human placenta tissue, human hysteromyoma tissue, human kidney tissue, human lung tissue, human ovary tissue, human paracancerous tissue of hysteromyoma, human skin tissue. Observed molecular weight by Western-blot: 63kd-65kd

## Validations



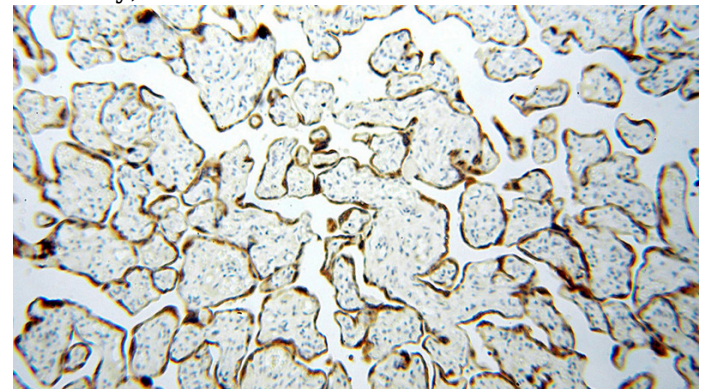
## Preparation

This antibody was obtained by immunization of STS recombinant protein (Accession Number: XM\_047442107). Purification method: Antigen affinity purified.

MCF7 cells were subjected to SDS PAGE followed by western blot with Catalog No:115738(STS antibody) at dilution of 1:500

## Formulation

PBS with 0.02% sodium azide and 50% glycerol pH 7.3.



## Storage

Store at -20°C. DO NOT ALIQUOT

## Clonality

Polyclonal

## Ig Type

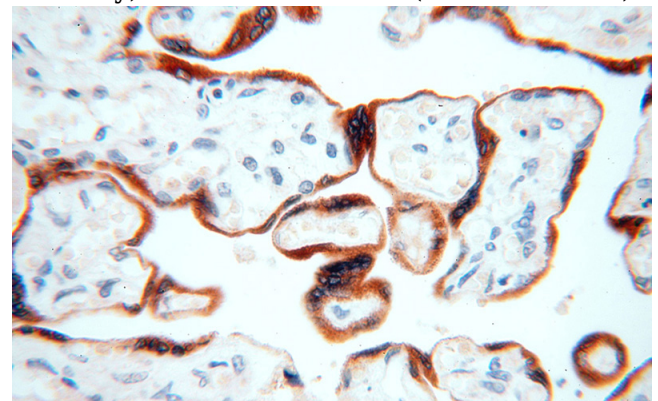
Rabbit IgG

## Applications

ELISA, WB, IHC

## Dilutions

Immunohistochemical of paraffin-embedded human placenta using Catalog No:115738(STS antibody) at dilution of 1:100 (under 10x lens)



# STS antibody



Catalog Number: 115738

---

Immunohistochemical of paraffin-embedded

human placenta using Catalog No:115738(STS antibody) at dilution of 1:100 (under 40x lens)