

# MOV10 antibody

Catalog Number: 112738

## Product name

MOV10 antibody

WB: 1:200-1:2000

IP: 1:200-1:2000

## Specificity

Human, Mouse, Rat; other species not tested.

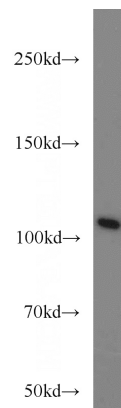
IHC: 1:20-1:200

IF: 1:10-1:100

## Antibody description

MOV10 Rabbit Polyclonal antibody. Positive IP detected in HepG2 cells. Positive WB detected in HEK-293 cells, HeLa cells, HepG2 cells, human liver tissue, mouse liver tissue. Positive IF detected in HepG2 cells. Positive IHC detected in human prostate cancer tissue. Observed molecular weight by Western-blot: 110-115 kDa

## Validations



## Preparation

This antibody was obtained by immunization of MOV10 recombinant protein (Accession Number: NM\_020963). Purification method: Antigen affinity purified.

HEK-293 cells were subjected to SDS PAGE followed by western blot with Catalog No:112738(MOV10 antibody) at dilution of 1:800

## Formulation

PBS with 0.1% sodium azide and 50% glycerol pH 7.3.

## Storage

Store at -20°C. DO NOT ALIQUOT

## Clonality

Polyclonal

## Ig Type

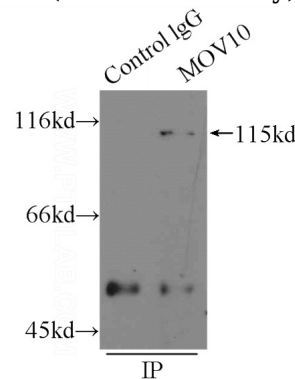
Rabbit IgG

## Applications

ELISA, WB, IHC, IP, IF

## Dilutions

Recommended Dilution:

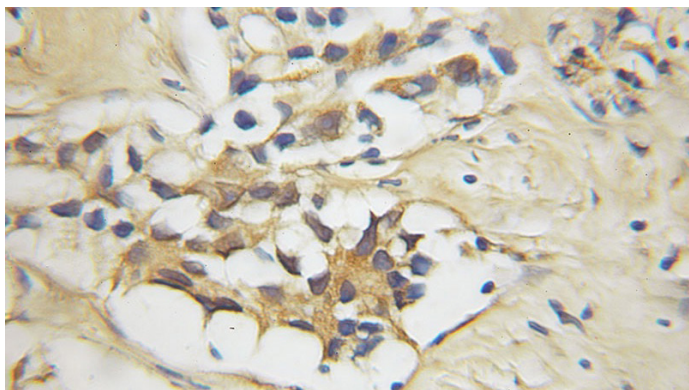


IP Result of anti-MOV10 (IP:Catalog No:112738, 3ug; Detection:Catalog No:112738 1:800) with HepG2 cells lysate 1000ug.

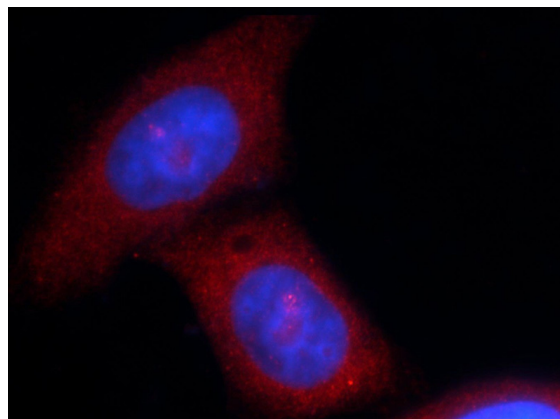
# MOV10 antibody

Catalog Number: 112738

---



Immunohistochemical of paraffin-embedded human prostate cancer using Catalog No:112738(MOV10 antibody) at dilution of 1:50 (under 25x lens)



Immunofluorescent analysis of HepG2 cells using Catalog No:112738(MOV10 Antibody) at dilution of 1:25 and Rhodamine-Goat anti-Rabbit IgG