

# Claudin 18 antibody



Catalog Number: 109338

## Product name

Claudin 18 antibody

WB: 1:200-1:2000

IP: 1:200-1:2000

## Specificity

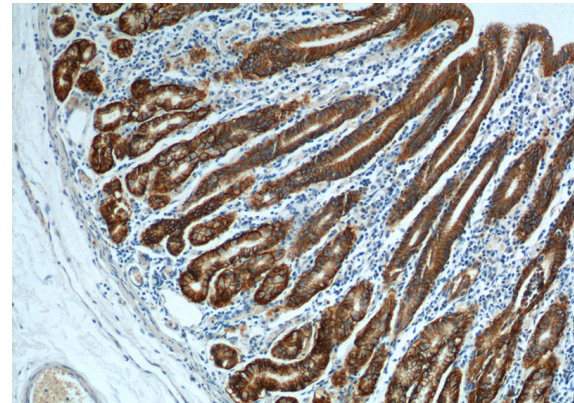
Human, Mouse, Rat; other species not tested.

IHC: 1:50-1:400

## Antibody description

Claudin 18 Rabbit Polyclonal antibody. Positive IP detected in mouse stomach tissue. Positive WB detected in mouse kidney tissue. Positive IHC detected in human stomach tissue, human ovary tumor tissue, human pancreas cancer tissue, human stomach cancer tissue. Observed molecular weight by Western-blot: 28-29 kDa

## Validations



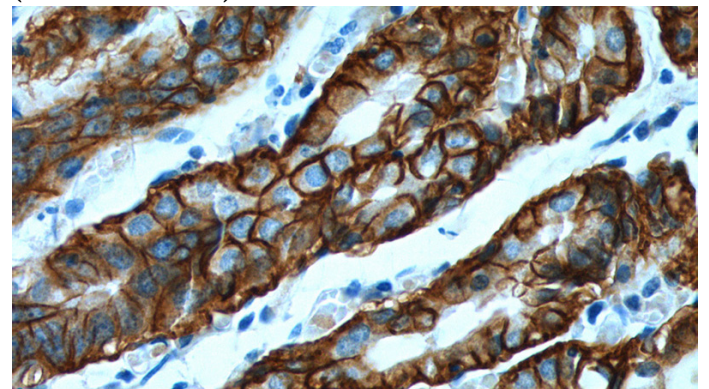
## Preparation

This antibody was obtained by immunization of Claudin 18 recombinant protein (Accession Number: NM\_016369). Purification method: Antigen affinity purified.

Immunohistochemistry of paraffin-embedded human stomach tissue slide using Catalog No:109338(CLDN18 Antibody) at dilution of 1:200 (under 10x lens).

## Formulation

PBS with 0.02% sodium azide and 50% glycerol pH 7.3.



## Storage

Store at -20°C. DO NOT ALIQUOT

## Clonality

Polyclonal

## Ig Type

Rabbit IgG

## Applications

ELISA, WB, IP, IHC

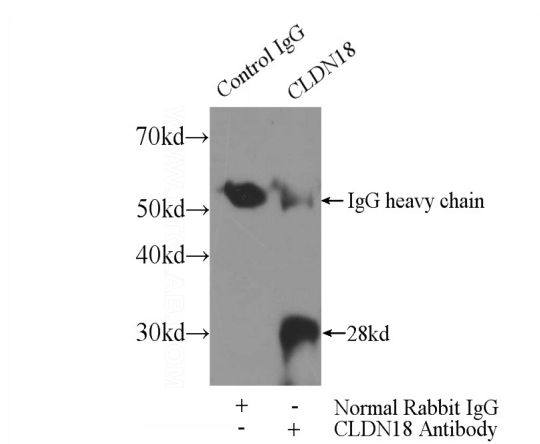
## Dilutions

Recommended Dilution:

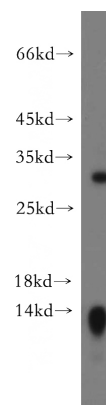
Immunohistochemistry of paraffin-embedded human stomach tissue slide using Catalog No:109338(CLDN18 Antibody) at dilution of 1:200 (under 40x lens).

# Claudin 18 antibody

Catalog Number: 109338



mouse stomach tissue lysate 4000ug.



mouse kidney tissue were subjected to SDS PAGE followed by western blot with Catalog No:109338(CLDN18 antibody) at dilution of 1:500

IP Result of anti-CLDN18 (IP:Catalog No:109338, 3ug; Detection:Catalog No:109338 1:500) with