

# PPAN Polyclonal Antibody



Catalog Number: 165338

## Product name

PPAN Polyclonal Antibody

## Specificity

Human, Mouse

## Antibody description

Polyclonal antibody to PPAN

## Preparation

Antigen: Recombinant fusion protein containing a sequence corresponding to amino acids 1-300 of human PPAN (NP\_064615.3).

## Formulation

PBS with 0.02% sodium azide, 50% glycerol, pH7.3.

## Storage

Store at -20°C. Avoid freeze / thaw cycles.

## Clonality

Polyclonal

## Ig Type

Rabbit IgG

## Applications

WB, IHC, IF

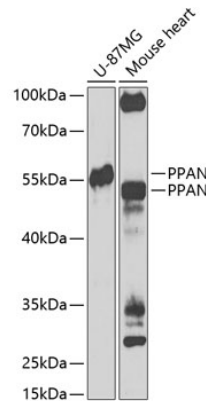
## Dilutions

WB 1:500 - 1:2000

IHC 1:50 - 1:200

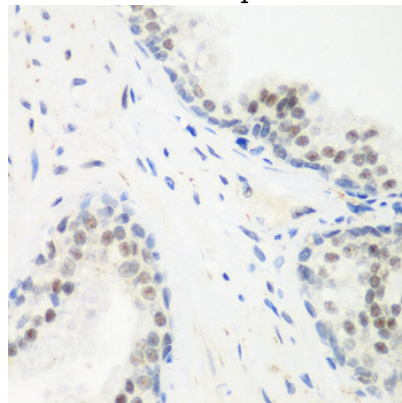
IF 1:50 - 1:200

## Validations



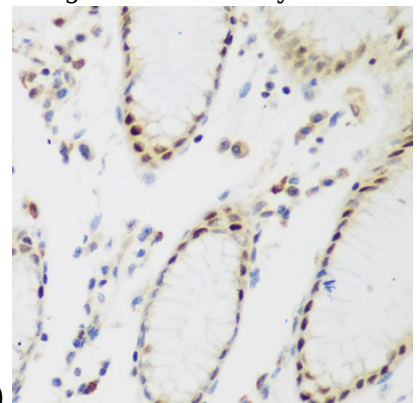
Western blot - PPAN Polyclonal Antibody

Western blot analysis of extracts of various cell lines, using PPAN Antibody at 1:1000 dilution. Secondary antibody: HRP Goat Anti-Rabbit IgG (H+L) at 1:10000 dilution. Lysates/proteins: 25ug per lane. Blocking buffer: 3% nonfat dry milk in TBST. Detection: ECL Enhanced Kit. Exposure time: 90s.



Immunohistochemistry - PPAN Polyclonal Antibody

Immunohistochemistry of paraffin-embedded human prostate using PPAN antibody at dilution of



1:200 (40x lens).

# PPAN Polyclonal Antibody

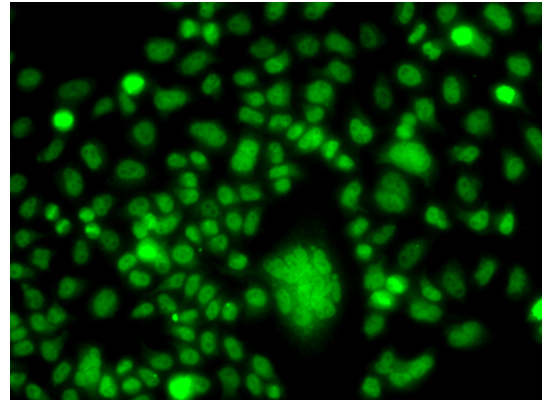


Catalog Number: 165338

---

Immunohistochemistry - PPAN Polyclonal Antibody

Immunohistochemistry of paraffin-embedded human stomach using PPAN antibody at dilution of 1:200 (40x lens).



Immunofluorescence - PPAN Polyclonal Antibody

Immunofluorescence analysis of A549 cells using PPAN antibody .