

# Anti-CD166/ALCAM antibody



Catalog Number: 106638

## Product name

Anti-CD166/ALCAM antibody

## Immunogen

[Cynomolgus CD166/ALCAM \(His Tag\) recombinant protein](#)

## Specificity

Cynomolgus CD166 / ALCAM

## Antibody description

Rabbit polyclonal to CD166/ALCAM

## Preparation

Produced in rabbits immunized with purified, recombinant Cynomolgus CD166 / ALCAM (rh CD166 / ALCAM; G7N2Q8; Met1-Ala526). CD166 / ALCAM specific IgG was purified by Cynomolgus CD166 / ALCAM affinity chromatography.

## Formulation

0.2 µm filtered solution in PBS

## Storage

This antibody can be stored at 2°C-8°C for one month without detectable loss of activity. Antibody products are stable for twelve months from date of receipt when stored at -20°C to -80°C.

Preservative-Free.

Sodium azide is recommended to avoid contamination (final concentration 0.05%-0.1%). It is toxic to cells and should be disposed of properly. Avoid repeated freeze-thaw cycles.

## Clonality

Polyclonal

## Ig Type

Rabbit IgG

## Applications

ELISA, WB, IP

## Dilutions

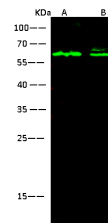
WB: 5-10 µg/ml

ELISA:0.1-0.2 µg/mL

This antibody can be used at 0.1-0.2 µg/mL with the appropriate secondary reagents to detect Cynomolgus CD166 / ALCAM. The detection limit for Cynomolgus CD166 / ALCAM is < 0.039 ng/well.

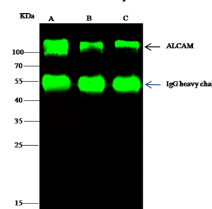
IP: 1-4 µg/mg of lysate

## Validations



Items	Lanes	A	B
Sample (whole cell lysate)		Hu-T78	SH-SY5Y
Sample Volume (µg/lane)		30	30
Gel		13%SDS-PAGE reducing gel	
Recommended Concentration		5-10µg/ml	
Secondary Antibody		Dylight 800-labeled Antibody to Rabbit IgG (H+L), at 1:5000 dilution.	

CD166 / ALCAM Antibody, Rabbit PAb, Antigen Affinity Purified, Western blot



Items	Lanes	A	B	C
Sample (whole cell lysate)		Hu-T78	SH-SY5Y	Daudi
Sample quantity		0.5 mg		
IP antibody quantity		2 µg		
Protein G Agarose		15 µl of 50% Protein G Agarose		
Gel		13%SDS-PAGE reducing gel		
Primary antibody		cyno.ALCAM antibody at 5 µg/ml		
Secondary antibody		Dylight 800-labeled antibody to rabbit IgG (H+L), at 1:5000 dilution.		

CD166 / ALCAM Antibody, Rabbit PAb, Antigen Affinity Purified, Immunoprecipitation