

# SIRP alpha antibody



Catalog Number: 115238

---

## Product name

SIRP alpha antibody

## Specificity

Human, Mouse, Rat; other species not tested.

## Antibody description

SIRP alpha Rabbit Polyclonal antibody. Positive WB detected in HL-60 cells, human heart tissue, mouse cerebellum tissue, PC-12 cells. Observed molecular weight by Western-blot: 65 kDa

## Preparation

This antibody was obtained by immunization of SIRP alpha recombinant protein (Accession Number: NM\_001330728). Purification method: Antigen affinity purified.

## Formulation

PBS with 0.02% sodium azide and 50% glycerol pH 7.3.

## Storage

Store at -20°C. DO NOT ALIQUOT

## Clonality

Polyclonal

## Ig Type

Rabbit IgG

## Applications

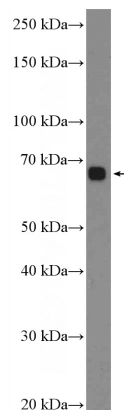
ELISA, WB

## Dilutions

Recommended Dilution:

WB: 1:200-1:2000

## Validations



HL-60 cells were subjected to SDS PAGE followed by western blot with Catalog No:115238(SIRPA Antibody) at dilution of 1:600