

LIN7C antibody



Catalog Number: 112238

Product name

LIN7C antibody

Immunogen

[Human LIN7C Recombinant protein \(His tag\)](#)

Specificity

human, mouse, rat; other species not tested.

Antibody description

LIN7C Rabbit Polyclonal antibody. Positive WB detected in human cerebellum tissue, human brain tissue, human kidney tissue. Observed molecular weight by Western-blot: 25kd

Preparation

This antibody was obtained by immunization of LIN7C recombinant protein (Accession Number: NM_018362). Purification method: Antigen affinity purified.

Formulation

PBS with 0.02% sodium azide and 50% glycerol pH 7.3.

Storage

Store at -20°C. DO NOT ALIQUOT

Clonality

Polyclonal

Ig Type

Rabbit IgG

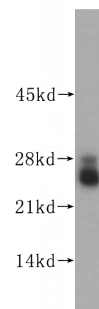
Applications

ELISA, WB

Dilutions

Recommended Dilution:
WB: 1:1000-1:10000

Validations



human cerebellum tissue were subjected to SDS PAGE followed by western blot with Catalog No:112238(LIN7C antibody) at dilution of 1:800