

# CBP,EIF4E antibody



Catalog Number: 108938

## Product name

CBP,EIF4E antibody

IHC: 1:20-1:200

IF: 1:10-1:100

## Specificity

Human,Mouse,Rat; other species not tested.

## Antibody description

CBP,EIF4E Rabbit Polyclonal antibody. Positive IHC detected in human breast cancer tissue, human gliomas tissue. Positive IF detected in HepG2 cells. Positive FC detected in HepG2 cells. Positive WB detected in HEK-293 cells. Observed molecular weight by Western-blot: 25 kDa, 50 kDa

## Preparation

This antibody was obtained by immunization of CBP,EIF4E recombinant protein (Accession Number: NM\_001968). Purification method: Antigen affinity purified.

## Formulation

PBS with 0.1% sodium azide and 50% glycerol pH 7.3.

## Storage

Store at -20°C. DO NOT ALIQUOT

## Clonality

Polyclonal

## Ig Type

Rabbit IgG

## Applications

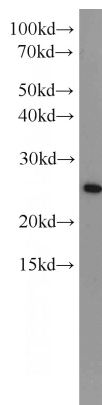
ELISA, WB, IHC, IF, FC

## Dilutions

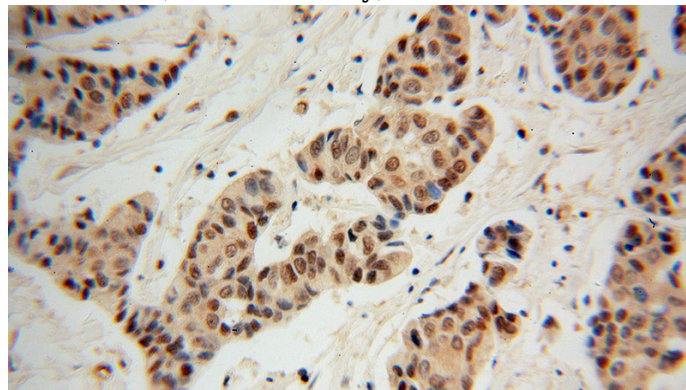
Recommended Dilution:

WB: 1:500-1:5000

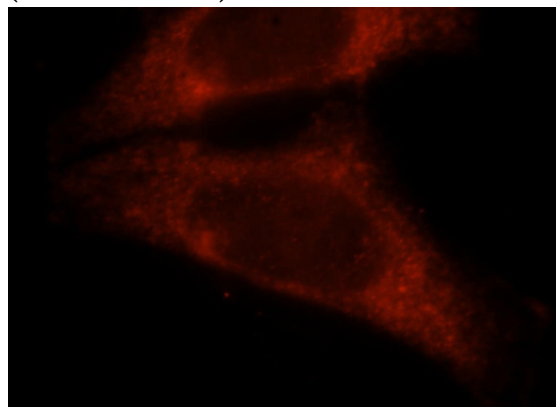
## Validations



HEK-293 cells were subjected to SDS PAGE followed by western blot with Catalog No:108938(EIF4E antibody) at dilution of 1:1000



Immunohistochemical of paraffin-embedded human breast cancer using Catalog No:108938(EIF4E antibody) at dilution of 1:100 (under 40x lens)



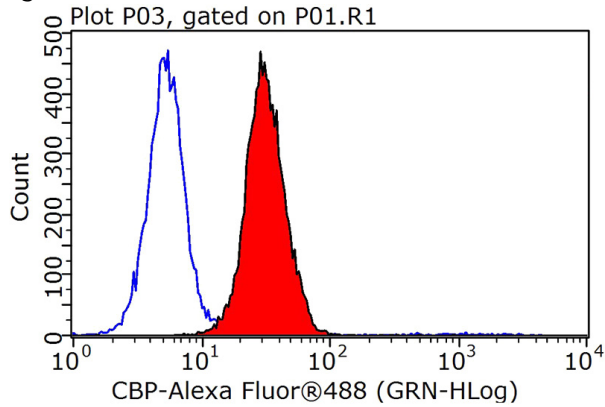
Immunofluorescent analysis of HepG2 cells, using

# CBP,EIF4E antibody



Catalog Number: 108938

EIF4E antibody Catalog No:108938 at 1:25 dilution and Rhodamine-labeled goat anti-rabbit IgG (red).



1X10<sup>6</sup> HepG2 cells were stained with 0.2ug EIF4E antibody (Catalog No:108938, red) and control antibody (blue). Fixed with 90% MeOH blocked with 3% BSA (30 min). Alexa Fluor 488-conjugated AffiniPure Goat Anti-Rabbit IgG(H+L) with dilution 1:1000.