

Anti-SFRS3 Rabbit antibody



Catalog Number: 168938

Product name

Anti-SFRS3 Rabbit antibody

Specificity

Human, Mouse, Rat

Antibody description

SFRS3 Rabbit monoclonal antibody

Preparation

Antigen: A synthetic peptide of human SFRS3

Formulation

50nM Tris-Glycine(pH 7.4), 0.15M NaCl, 40%Glycerol, 0.01% sodium azide and 0.05% BSA.

Storage

Store at 4°C short term. Store at -20°C long term. Avoid freeze / thaw cycle.

Clonality

Monoclonal

Ig Type

Rabbit IgG

Applications

WB, IHC-P, ICC/IF, FC

Dilutions

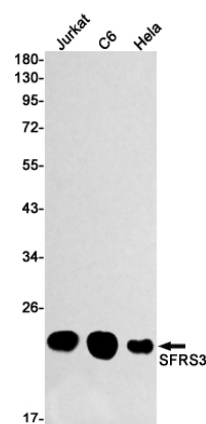
WB: 1/1000

IHC: 1/50

ICC/IF: 1/100

FC: 1/50

Validations



Western blot detection of SFRS3 in Jurkat,C6,HeLa cell lysates using SFRS3 Rabbit mAb(1:1000 diluted).Predicted band size:19kDa.Observed band size:19kDa.