

Anti-XPO4 Rabbit antibody



Catalog Number: 167538

Product name

Anti-XPO4 Rabbit antibody

Specificity

Human, Mouse, Rat

Antibody description

XPO4 Rabbit polyclonal antibody

Preparation

Antigen: A synthetic peptide of human Exportin 4

Formulation

Supplied in 50nM Tris-Glycine(pH 7.4), 0.15M NaCl, 40%Glycerol, 0.01% sodium azide and 0.05% BSA.

Storage

Store at -20°C. Stable for 12 months from date of receipt.

Clonality

Polyclonal

Ig Type

Rabbit IgG

Applications

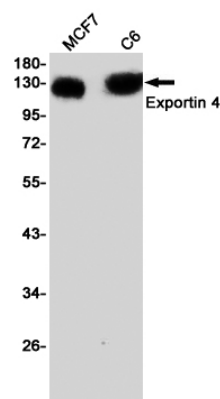
WB, IP

Dilutions

WB: 1/1000-1/5000

IP: 1/20-1/50

Validations



Western blot detection of Exportin 4 in MCF7,C6 cell lysates using Exportin 4 Rabbit pAb(1:1000 diluted).Predicted band size:130KDa.Observed band size:130KDa.