

UBE2U antibody

Catalog Number: 116538

Product name

UBE2U antibody

IHC: 1:20-1:200

IF: 1:10-1:100

Specificity

Human, Mouse; other species not tested.

Antibody description

UBE2U Rabbit Polyclonal antibody. Positive IF detected in HepG2 cells. Positive IHC detected in human kidney tissue. Positive WB detected in human heart tissue, mouse heart tissue. Observed molecular weight by Western-blot: 38kd

Preparation

This antibody was obtained by immunization of UBE2U recombinant protein (Accession Number: NM_152489). Purification method: Antigen affinity purified.

Formulation

PBS with 0.02% sodium azide and 50% glycerol pH 7.3.

Storage

Store at -20°C. DO NOT ALIQUOT

Clonality

Polyclonal

Ig Type

Rabbit IgG

Applications

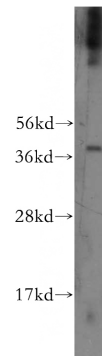
ELISA, WB, IHC, IF

Dilutions

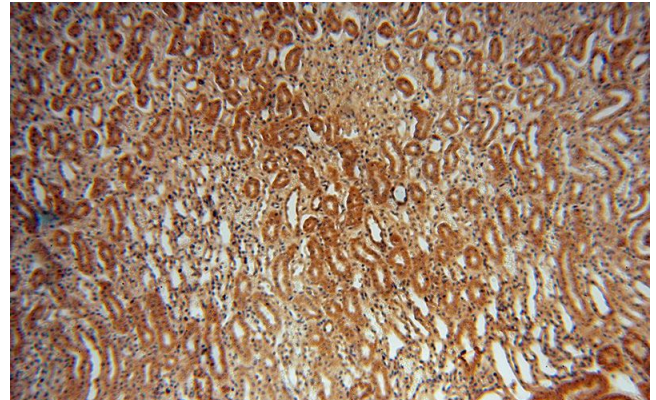
Recommended Dilution:

WB: 1:200-1:2000

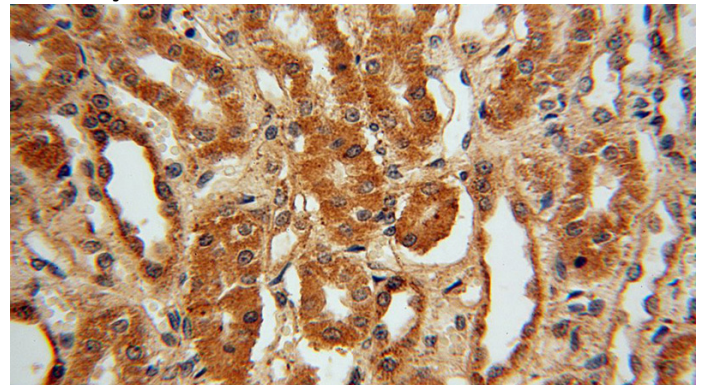
Validations



human heart tissue were subjected to SDS PAGE followed by western blot with Catalog No:116538(UBE2U antibody) at dilution of 1:500



Immunohistochemical of paraffin-embedded human kidney using Catalog No:116538(UBE2U antibody) at dilution of 1:50 (under 10x lens)

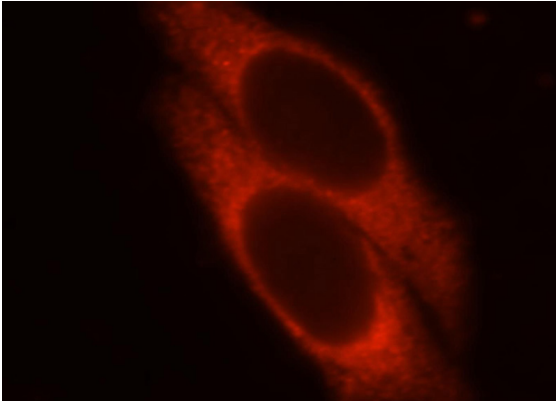


Immunohistochemical of paraffin-embedded human kidney using Catalog No:116538(UBE2U antibody) at dilution of 1:50 (under 10x lens)

UBE2U antibody

Catalog Number: 116538

antibody) at dilution of 1:50 (under 40x lens)



Immunofluorescent analysis of HepG2 cells, using UBE2U antibody Catalog No:116538 at 1:25 dilution and Rhodamine-labeled goat anti-rabbit IgG (red).