

Phospho-NEDD4L-S448 pAb



Catalog Number: 166538

Product name

Phospho-NEDD4L-S448 pAb

Specificity

Human, Mouse, Rat

Antibody description

Polyclonal antibody to Phospho-NEDD4L-S448

Preparation

Antigen: A synthetic phosphorylated peptide around S448 of human NEDD4L (NP_001138439.1).

Formulation

PBS with 0.02% sodium azide, 50% glycerol, pH7.3.

Storage

Store at -20°C. Avoid freeze / thaw cycles.

Clonality

Polyclonal

Ig Type

Rabbit IgG

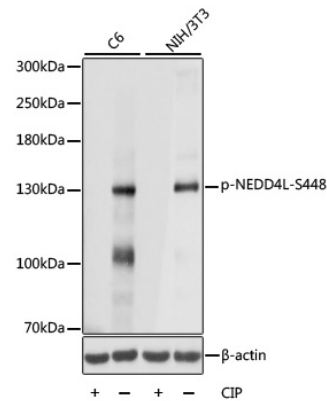
Applications

WB

Dilutions

WB 1:500 - 1:2000

Validations



Western blot - Phospho-NEDD4L-S448 pAb

Western blot analysis of extracts of various cell lines, using Phospho-NEDD4L-S448 antibody at 1:1000 dilution. NIH 3T3 cell lysate were treated by CIP (20ul CIP for each 400ul cell lysate) at 37u2103 for 1 hour. C6 cell lysate were treated by CIP (20ul CIP for each 400ul cell lysate) at 37u2103 for 1 hour. Secondary antibody: HRP Goat Anti-Rabbit IgG (H+L) at 1:10000 dilution. Lysates/proteins: 25ug per lane. Blocking buffer: 3% BSA. Detection: ECL Basic Kit. Exposure time: 5s.