

Anti-Growth Hormone Receptor / GHR / GHBP antibody



Catalog Number: 103538

Product name

Anti-Growth Hormone Receptor / GHR / GHBP antibody

Immunogen

[Mouse Growth Hormone Receptor / GHR / GHBP \(His Tag\) recombinant protein](#)

Specificity

Mouse Growth Hormone Receptor / GHR / GHBP

Antibody description

Rabbit polyclonal to Growth Hormone Receptor / GHR / GHBP

Preparation

Produced in rabbits immunized with purified, recombinant Mouse Growth Hormone Receptor / GHR / GHBP (rM Growth Hormone Receptor / GHR / GHBP; NP_034414.2; Met 1-Gln 273). Growth Hormone Receptor / GHR / GHBP specific IgG was purified by Mouse Growth Hormone Receptor / GHR / GHBP affinity chromatography.

Formulation

0.2 µm filtered solution in PBS with 5% trehalose

Storage

This antibody can be stored at 2°C-8°C for one month without detectable loss of activity. Antibody products are stable for twelve months from date of receipt when stored at -20°C to -80°C. Preservative-Free.

Sodium azide is recommended to avoid contamination (final concentration 0.05%-0.1%). It is toxic to cells and should be disposed of properly. Avoid repeated freeze-thaw cycles.

Clonality

Polyclonal

Ig Type

Rabbit IgG

Applications

ELISA, WB, IHC-P

Dilutions

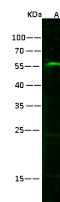
WB: 10-30 µg/mL

ELISA: 0.1-0.2 µg/mL

This antibody can be used at 0.1-0.2 µg/mL with the appropriate secondary reagents to detect Mouse GHR. The detection limit for Mouse GHR is approximately 0.00245 ng/well.

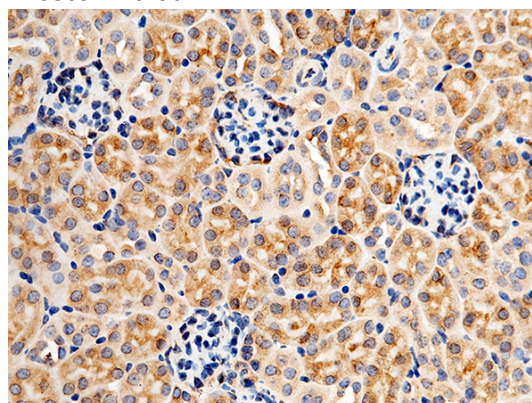
IHC-P: 0.1-2 µg/mL

Validations



Lanes	A
Items	A
Sample (tube/cell lysate)	PC-3
Sample Volume (µg/lane)	30
Gel	13% SDS-PAGE reducing gel
Recommended Concentration	10-30 µg/ml
Secondary Antibody	Dylight 800 labeled Antibody To Rabbit IgG (H+L) at 1:5000 dilution.
Developed using Odyssey imaging system.	
Explanation	Predicted band size : 71 kDa Observed band size : 55 kDa

Growth Hormone Receptor / GHR / GHBP Antibody, Rabbit PAb, Antigen Affinity Purified, Western blot



Anti-Growth Hormone Receptor / GHR / GHBP antibody



Catalog Number: 103538

Growth Hormone Receptor / GHR / GHBP Antibody, Rabbit PAb, Antigen Affinity Purified, Immunohistochemistry

Growth Hormone Receptor / GHR / GHBP Antibody, Rabbit PAb, Antigen Affinity Purified, Immunohistochemistry

Immunochemical staining of mouse GHR in mouse kidney with rabbit polyclonal antibody (1 $\mu\text{g}/\text{mL}$, formalin-fixed paraffin embedded sections).

Immunochemical staining of mouse GHR in mouse stomach with rabbit polyclonal antibody (1 $\mu\text{g}/\text{mL}$, formalin-fixed paraffin embedded sections).

