

# Anti-c-Met Rabbit antibody



Catalog Number: 167138

## Product name

Anti-c-Met Rabbit antibody

## Specificity

Human, Mouse, Rat

## Antibody description

c-Met Rabbit polyclonal antibody

## Preparation

Antigen: Peptide sequence around aa.1232~1236 (K-E-Y-Y-S) derived from Human Met.

## Formulation

Supplied at 1.0mg/mL in phosphate buffered saline (without Mg<sup>2+</sup> and Ca<sup>2+</sup>), pH 7.4, 150mM NaCl, 0.02% sodium azide and 50% glycerol.

## Storage

Store at 4°C short term. Store at -20°C long term. Avoid freeze / thaw cycle.

## Clonality

Polyclonal

## Ig Type

Rabbit IgG

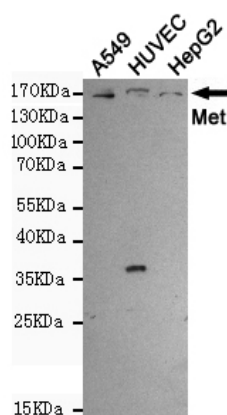
## Applications

WB

## Dilutions

WB:1/1000

## Validations



Western blot analysis of extracts from A549, HUVEC and HepG2 cells using Met (Ab-1234) rabbit pAb (1:1000 diluted). Predicted band size: 156KDa. Observed band size: 156KDa.