

# LAMR1,RPSA antibody



Catalog Number: 112138

---

## Product name

LAMR1,RPSA antibody

## Specificity

Human,Mouse,Rat; other species not tested.

## Antibody description

LAMR1,RPSA Rabbit Polyclonal antibody. Positive IHC detected in human ovary tumor tissue.

## Preparation

This antibody was obtained by immunization of LAMR1,RPSA recombinant protein (Accession Number: NM\_002295). Purification method: Antigen affinity purified.

## Formulation

PBS with 0.1% sodium azide and 50% glycerol pH 7.3.

## Storage

Store at -20°C. DO NOT ALIQUOT

## Clonality

Polyclonal

## Ig Type

Rabbit IgG

## Applications

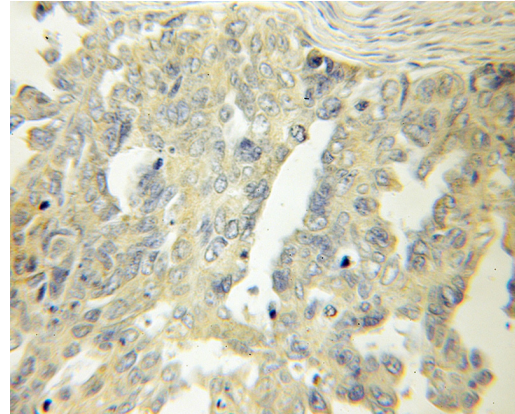
ELISA, IHC

## Dilutions

Recommended Dilution:

IHC: 1:20-1:200

## Validations



Immunohistochemical of paraffin-embedded human ovary tumor using Catalog No:112138(LAMR1,RPSA antibody) at dilution of 1:50 (under 10x lens)