

Anti-FGFR1 Oncogene Partner Rabbit antibody



Catalog Number: 167838

Product name

Rabbit IgG

Anti-FGFR1 Oncogene Partner Rabbit antibody

Applications

Specificity

WB, ICC/IF, FC, IP

Human, Mouse, Rat

Dilutions

Antibody description

WB: 1/1000

FGFR1 Oncogene Partner Rabbit monoclonal antibody

ICC/IF: 1/50

FC: 1/20-1/100

Preparation

IP: 1/20

Antigen: A synthetic peptide of human FGFR1 Oncogene Partner

Validations

Formulation

50nM Tris-Glycine(pH 7.4), 0.15M NaCl, 40%Glycerol, 0.01% sodium azide and 0.05% BSA

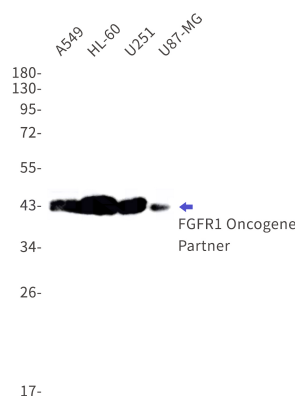
Storage

Store at 4°C short term. Store at -20°C long term. Avoid freeze / thaw cycle.

Clonality

Monoclonal

Ig Type



Western blot detection of FGFR1 Oncogene Partner in A549,HL-60,U251,U87-MG cell lysates using FGFR1 Oncogene Partner Rabbit mAb(1:1000 diluted).Predicted band size:43kDa.Observed band size:43kDa.