

SUMO2/3 antibody



Catalog Number: 115838

Product name

SUMO2/3 antibody

IHC: 1:20-1:200

IF: 1:20-1:200

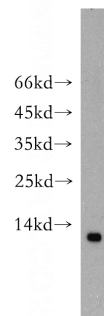
Specificity

Human; other species not tested.

Validations

Antibody description

SUMO2/3 Rabbit Polyclonal antibody. Positive WB detected in Apoptosised HeLa cells, Recombinant protein. Positive IHC detected in human gliomas tissue. Positive IF detected in HEK-293 cells. Observed molecular weight by Western-blot: 11-14kd



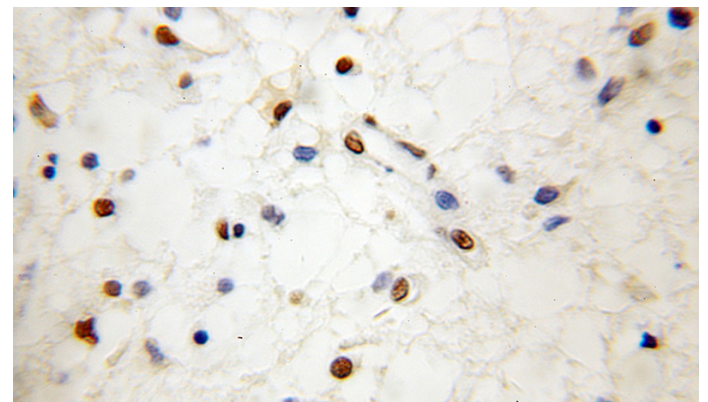
Preparation

This antibody was obtained by immunization of SUMO2/3 recombinant protein (Accession Number: NM_006937). Purification method: Antigen affinity purified.

Apoptosised HeLa cells were subjected to SDS PAGE followed by western blot with Catalog No:115838(SUMO2/3 antibody) at dilution of 1:100

Formulation

PBS with 0.02% sodium azide and 50% glycerol pH 7.3.



Storage

Store at -20°C. DO NOT ALIQUOT

Clonality

Polyclonal

Ig Type

Rabbit IgG

Applications

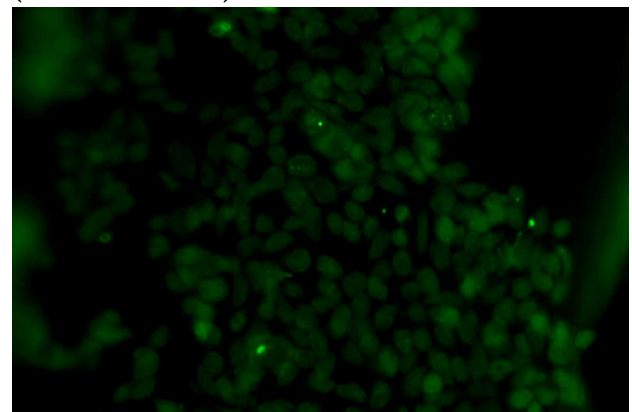
ELISA, WB, IHC, IF

Dilutions

Recommended Dilution:

WB: 1:200-1:1000

Immunohistochemical of paraffin-embedded human gliomas using Catalog No:115838(SUMO2/3 antibody) at dilution of 1:50 (under 10x lens)



SUMO2/3 antibody



Catalog Number: 115838

Immunofluorescent analysis of HEK-293 cells
using Catalog No:115838(SUMO2/3 Antibody) at

dilution of 1:50 and Alexa Fluor 488-conjugated
AffiniPure Goat Anti-Rabbit IgG(H+L)