

RPS27 antibody

Catalog Number: 114838

Product name

RPS27 antibody

IP: 1:200-1:2000

IHC: 1:20-1:200

Specificity

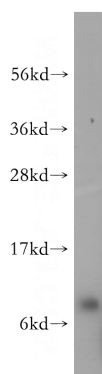
Human, Mouse, Rat; other species not tested.

IF: 1:10-1:100

Antibody description

RPS27 Rabbit Polyclonal antibody. Positive IF detected in Hela cells. Positive IHC detected in human endometrial cancer tissue. Positive WB detected in MCF7 cells, SGC-7901 cells. Positive IP detected in SGC-7901 cells. Observed molecular weight by Western-blot: 9 kDa

Validations



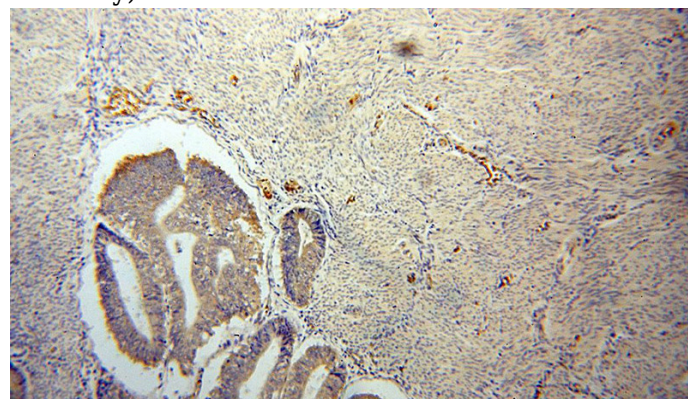
Preparation

This antibody was obtained by immunization of RPS27 recombinant protein (Accession Number: NM_001030). Purification method: Antigen affinity purified.

MCF7 cells were subjected to SDS PAGE followed by western blot with Catalog No:114838(RPS27 antibody) at dilution of 1:500

Formulation

PBS with 0.02% sodium azide and 50% glycerol pH 7.3.



Storage

Store at -20°C. DO NOT ALIQUOT

Clonality

Polyclonal

Ig Type

Rabbit IgG

Applications

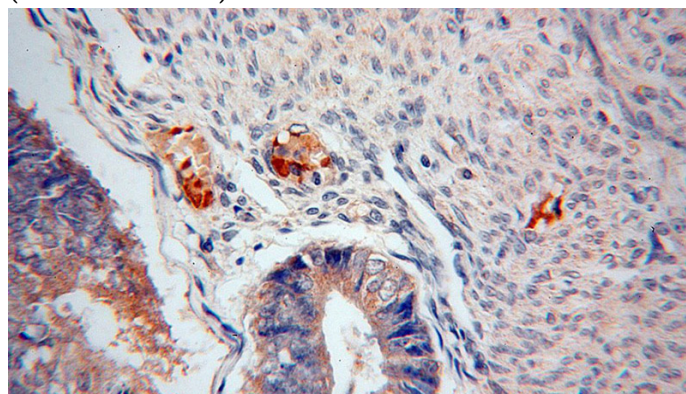
ELISA, WB, IHC, IF, IP

Dilutions

Recommended Dilution:

WB: 1:500-1:5000

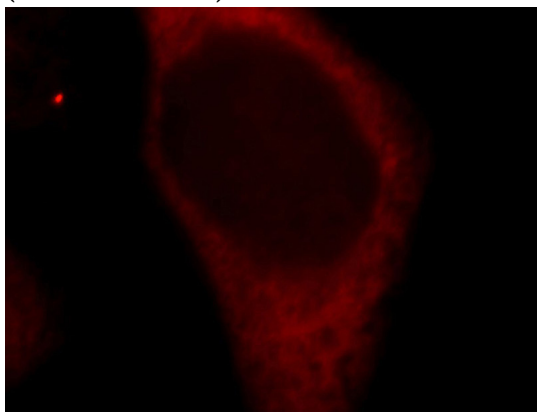
Immunohistochemical of paraffin-embedded human endometrial cancer using Catalog No:114838(RPS27 antibody) at dilution of 1:50 (under 10x lens)



RPS27 antibody

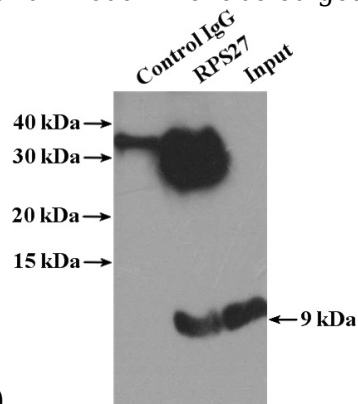
Catalog Number: 114838

Immunohistochemical of paraffin-embedded human endometrial cancer using Catalog No:114838(RPS27 antibody) at dilution of 1:50 (under 40x lens)



Immunofluorescent analysis of Hela cells, using

RPS27 antibody Catalog No:114838 at 1:25 dilution and Rhodamine-labeled goat anti-rabbit



IgG (red).

IP Result of anti-RPS27 (IP:Catalog No:114838, 4ug; Detection:Catalog No:114838 1:500) with SGC-7901 cells lysate 2400ug.