

CLDN11 Polyclonal Antibody



Catalog Number: 163838

Product name

CLDN11 Polyclonal Antibody

Specificity

Human

Antibody description

Polyclonal antibody to CLDN11

Preparation

Antigen: Recombinant fusion protein containing a sequence corresponding to amino acids 26-207 of human CLDN11 (NP_005593.2).

Formulation

PBS with 0.02% sodium azide, 50% glycerol, pH7.3.

Storage

Store at -20°C. Avoid freeze / thaw cycles.

Clonality

Polyclonal

Ig Type

Rabbit IgG

Applications

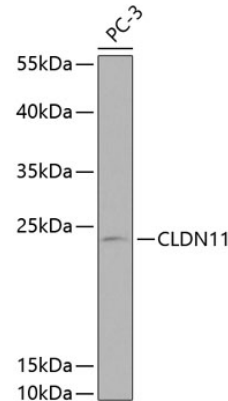
WB, IF

Dilutions

WB 1:500 - 1:2000

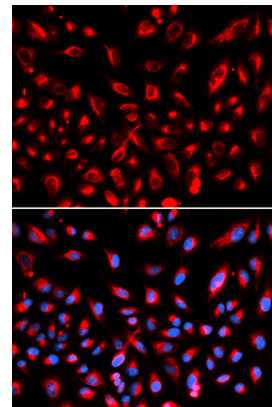
IF 1:20 - 1:50

Validations



Western blot - CLDN11 Polyclonal Antibody

Western blot analysis of extracts of PC-3 cells, using CLDN11 antibody at 1:1000 dilution. Secondary antibody: HRP Goat Anti-Rabbit IgG (H+L) at 1:10000 dilution. Lysates/proteins: 25ug per lane. Blocking buffer: 3% nonfat dry milk in TBST.



Immunofluorescence - CLDN11 Polyclonal Antibody

Immunofluorescence analysis of U2OS cells using CLDN11 antibody. Blue: DAPI for nuclear staining.