

# IRF6 antibody



Catalog Number: 111838

## Product name

IRF6 antibody

## Specificity

Human, Mouse, Rat; other species not tested.

## Antibody description

IRF6 Rabbit Polyclonal antibody. Positive IF detected in PC-3 cells. Positive WB detected in PC-3 cells, A549 cells, COLO 320 cells, MCF-7 cells. Observed molecular weight by Western-blot: 55-65 kDa

## Preparation

This antibody was obtained by immunization of IRF6 recombinant protein (Accession Number: NM\_006147). Purification method: Antigen affinity purified.

## Formulation

PBS with 0.1% sodium azide and 50% glycerol pH 7.3.

## Storage

Store at -20°C. DO NOT ALIQUOT

## Clonality

Polyclonal

## Ig Type

Rabbit IgG

## Applications

ELISA, WB, IF

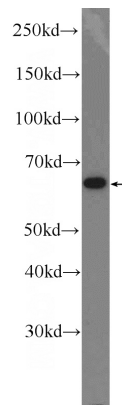
## Dilutions

Recommended Dilution:

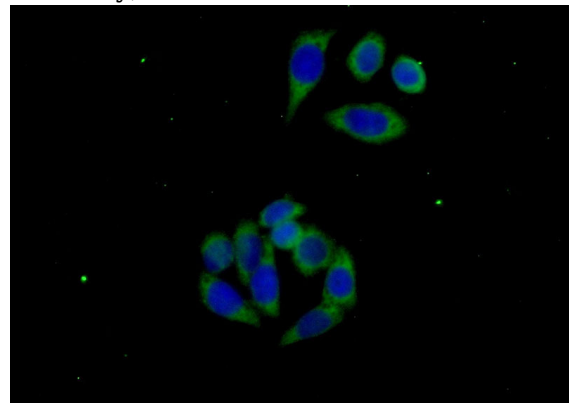
WB: 1:200-1:2000

IF: 1:20-1:200

## Validations



PC-3 cells were subjected to SDS PAGE followed by western blot with Catalog No:111838(IRF6 Antibody) at dilution of 1:600



Immunofluorescent analysis of (-20oc Ethanol) fixed PC-3 cells using Catalog No:111838(IRF6 Antibody) at dilution of 1:50 and Alexa Fluor 488-conjugated AffiniPure Goat Anti-Rabbit IgG(H+L)