

Anti-ZMYM2 antibody



Catalog Number: 100838

Product name

Anti-ZMYM2 antibody

Specificity

human ZMYM2

Antibody description

Rabbit polyclonal to ZMYM2

Preparation

Produced in rabbits immunized with A synthetic peptide corresponding to the C-terminus of the human ZMYM2, and purified by antigen affinity chromatography.

Formulation

0.2 µm filtered solution in PBS

Storage

This antibody can be stored at 2°C-8°C for one month without detectable loss of activity. Antibody products are stable for twelve months from date of receipt when stored at -20°C to -80°C.

Preservative-Free.

Sodium azide is recommended to avoid contamination (final concentration 0.05%-0.1%). It is toxic to cells and should be disposed of properly. Avoid repeated freeze-thaw cycles.

Clonality

Polyclonal

Ig Type

Rabbit IgG

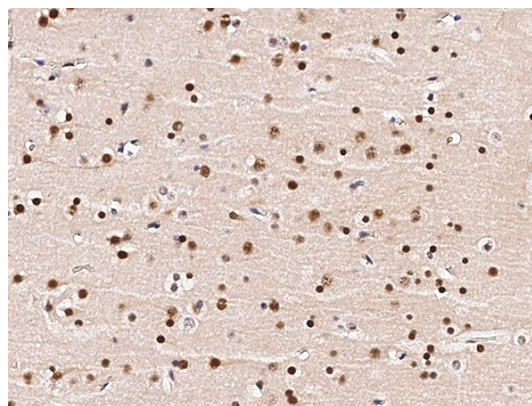
Applications

IHC-P

Dilutions

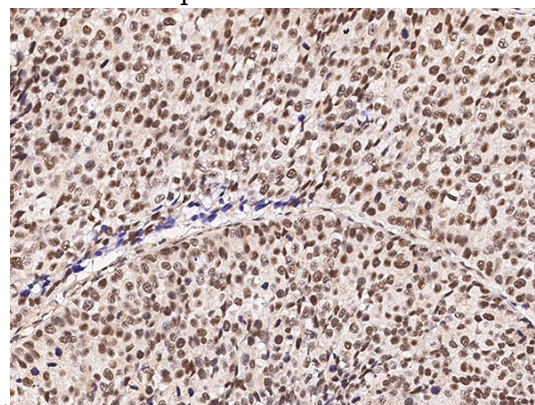
IHC-P: 0.1-2 µg/mL

Validations



ZMYM2 Antibody, Rabbit PAb, Antigen Affinity Purified, Immunohistochemistry

Immunochemical staining of human ZMYM2 in human brain with rabbit polyclonal antibody (0.3 µg/mL, formalin-fixed paraffin embedded



sections).

ZMYM2 Antibody, Rabbit PAb, Antigen Affinity Purified, Immunohistochemistry

Immunochemical staining of human ZMYM2 in human breast carcinoma with rabbit polyclonal antibody (0.3 µg/mL, formalin-fixed paraffin embedded sections).