

MC1R Monoclonal Antibody



Catalog Number: 160838

Product name

MC1R Monoclonal Antibody

Specificity

Human

Antibody description

Monoclonal antibody to MC1R

Preparation

Antigen: A synthetic peptide of human MC1R

Formulation

PBS with 0.02% sodium azide, pH7.3.

Storage

Store at 4°C. Avoid freeze / thaw cycles.

Clonality

Monoclonal

Ig Type

Mouse IgG

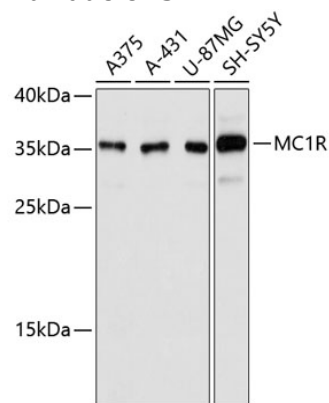
Applications

WB

Dilutions

WB 1:500 - 1:1000

Validations



Western blot - MC1R Monoclonal Antibody

Western blot analysis of extracts of various cell lines, using MC1R antibody at 1:1000 dilution. Secondary antibody: HRP Goat Anti-Mouse IgG (H+L) at 1:10000 dilution. Lysates/proteins: 25ug per lane. Blocking buffer: 3% nonfat dry milk in TBST. Detection: ECL Basic Kit. Exposure time: 10s.