

# BCS1L antibody



Catalog Number: 108438

## Product name

BCS1L antibody

## Immunogen

[Human BCS1L Recombinant protein \(GST tag\)](#)

## Specificity

Human, Mouse, Rat; other species not tested.

## Antibody description

BCS1L Rabbit Polyclonal antibody. Positive IHC detected in human gliomas tissue, human kidney tissue. Positive IF detected in A549 cells. Positive WB detected in A549 cells, HEK-293 cells, HeLa cells, human brain tissue, mouse colon tissue, mouse kidney tissue, mouse liver tissue, mouse skeletal muscle tissue, mouse small intestine tissue, rat liver tissue. Observed molecular weight by Western-blot: 50-55 kDa

## Preparation

This antibody was obtained by immunization of BCS1L recombinant protein (Accession Number: NM\_001320717). Purification method: Antigen affinity purified.

## Formulation

PBS with 0.1% sodium azide and 50% glycerol pH 7.3.

## Storage

Store at -20°C. DO NOT ALIQUOT

## Clonality

Polyclonal

## Ig Type

Rabbit IgG

## Applications

ELISA, WB, IHC, IF

## Dilutions

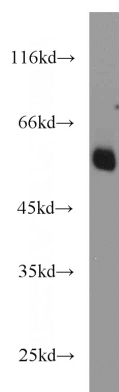
Recommended Dilution:

WB: 1:200-1:2000

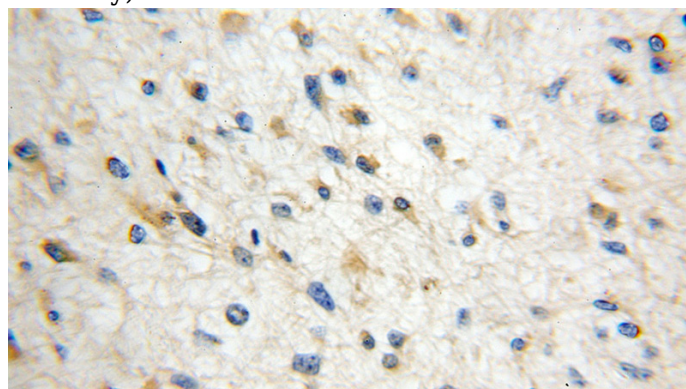
IHC: 1:20-1:200

IF: 1:20-1:200

## Validations



A549 cells were subjected to SDS PAGE followed by western blot with Catalog No:117111(BCS1L antibody) at dilution of 1:1000



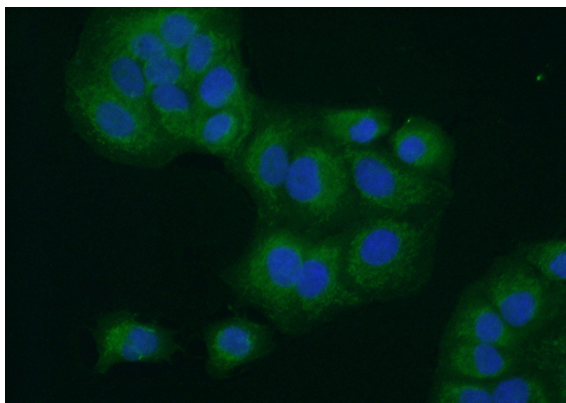
Immunohistochemical of paraffin-embedded human gliomas using Catalog No:117111(BCS1L antibody) at dilution of 1:50 (under 10x lens)

# BCS1L antibody



Catalog Number: 108438

---



Immunofluorescent analysis of (10% Formaldehyde) fixed A549 cells using Catalog No:117111(BCS1L Antibody) at dilution of 1:50 and Alexa Fluor 488-conjugated AffiniPure Goat Anti-Rabbit IgG(H+L)