

SMC3 antibody

Catalog Number: 115438

Product name

SMC3 antibody

Specificity

Human, Mouse, Rat; other species not tested.

Antibody description

SMC3 Rabbit Polyclonal antibody. Positive IF detected in HeLa cells. Positive WB detected in HeLa cells, Jurkat cells, mouse brain tissue. Observed molecular weight by Western-blot: 140 kDa

Preparation

This antibody was obtained by immunization of SMC3 recombinant protein (Accession Number: NM_005445). Purification method: Antigen affinity purified.

Formulation

PBS with 0.02% sodium azide and 50% glycerol pH 7.3.

Storage

Store at -20°C. DO NOT ALIQUOT

Clonality

Polyclonal

Ig Type

Rabbit IgG

Applications

ELISA, WB, IF

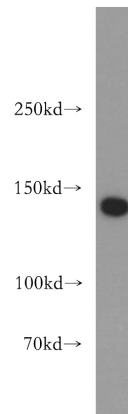
Dilutions

Recommended Dilution:

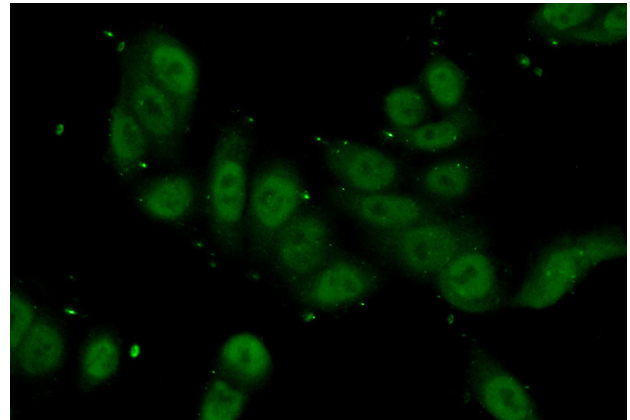
WB: 1:500-1:5000

IF: 1:50-1:500

Validations



HeLa cells were subjected to SDS PAGE followed by western blot with Catalog No:115438(SMC3 antibody) at dilution of 1:300



Immunofluorescent analysis of (10% Formaldehyde) fixed HeLa cells using Catalog No:115438(SMC3 Antibody) at dilution of 1:50 and Alexa Fluor 488-conjugated AffiniPure Goat Anti-Rabbit IgG(H+L)