

# OSGEPL1 antibody



Catalog Number: 113438

## Product name

OSGEPL1 antibody

## Specificity

Human, Mouse; other species not tested.

## Antibody description

OSGEPL1 Rabbit Polyclonal antibody. Positive WB detected in HeLa cells, MCF-7 cells, NIH/3T3 cells. Positive IHC detected in human colon tissue, human prostate hyperplasia tissue. Observed molecular weight by Western-blot: 45 kDa

## Preparation

This antibody was obtained by immunization of OSGEPL1 recombinant protein (Accession Number: XM\_011511631). Purification method: Antigen affinity purified.

## Formulation

PBS with 0.1% sodium azide and 50% glycerol pH 7.3.

## Storage

Store at -20°C. DO NOT ALIQUOT

## Clonality

Polyclonal

## Ig Type

Rabbit IgG

## Applications

ELISA, WB, IHC

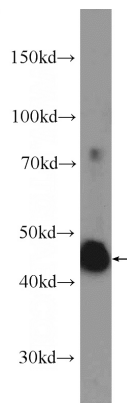
## Dilutions

Recommended Dilution:

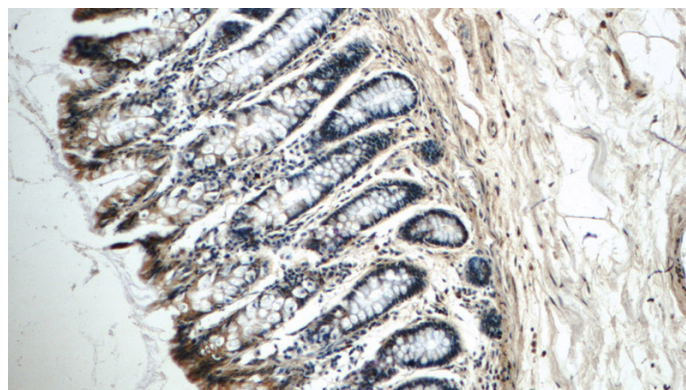
WB: 1:500-1:5000

IHC: 1:20-1:200

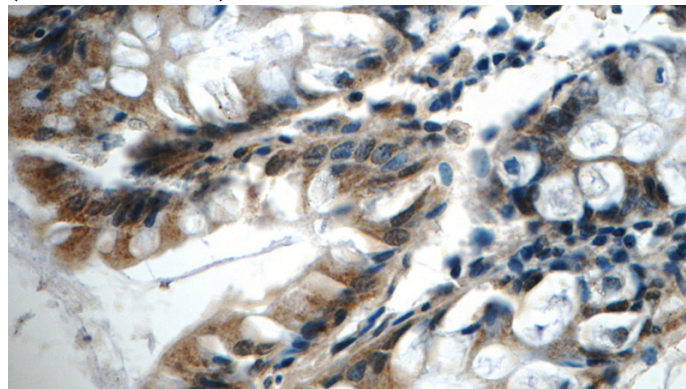
## Validations



HeLa cells were subjected to SDS PAGE followed by western blot with Catalog No:113438(OSGEPL1 Antibody) at dilution of 1:1000



Immunohistochemistry of paraffin-embedded human colon tissue slide using Catalog No:113438(OSGEPL1 Antibody) at dilution of 1:50 (under 10x lens)



Immunohistochemistry of paraffin-embedded human colon tissue slide using Catalog

# OSGEPL1 antibody



Catalog Number: 113438

---

No:113438(OSGEPL1 Antibody) at dilution of 1:50 (under 40x lens)