

General Information

Gene Name Synonym

14-3-3 protein T-cell; 14-3-3 protein tau; Protein HS1

Protein Construction

A DNA sequence encoding the human YWHAQ (P27348) (Met 1-Asn 245) was fused with the GST tag at the N-terminus.

Organism

Human

Expression Host

E. coli

QC Testing

Purity

> 88 % as determined by SDS-PAGE

Endotoxin

Please contact us for more information.

Stability

Samples are stable for up to twelve months from date of receipt at -70°C

Predicted N terminal

Met

Molecular Mass

The recombinant human YWHAQ/GST chimera

consists of 476 amino acids and has a predicted molecular mass of 54.6 kDa. It migrates as an approximately 53 kDa band in SDS-PAGE under reducing conditions.

Formulation

Lyophilized from sterile 20mM Tris, 0.15m NaCl, 20mM GSH, pH 7.5

1. 5 % trehalose and mannitol are added as protectants before lyophilization.
2. Please contact us for any concerns or special requirements.

Usage Guide

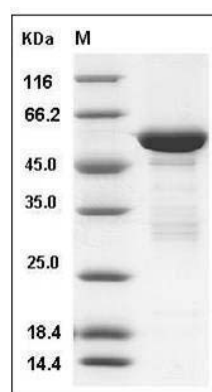
Storage

Store it under sterile conditions at -20°C to -80°C. It is recommended that the protein be aliquoted for optimal storage. Avoid repeated freeze-thaw cycles.

Reconstitution

Adding sterile water, prepare a stock solution of 0.25 mg/ml. Concentration is measured by UV-Vis.

SDS-PAGE



Human 14-3-3 tau / 14-3-3 theta / YWHAQ Protein (GST Tag) SDS-PAGE